

For Research Use Only

PLP1 Polyclonal antibody, PBS Only

Catalog Number:33901-1-PBS



Basic Information

Catalog Number:

33901-1-PBS

Size:

100ug , Concentration: 1 mg/ml by Nanodrop;

Source:

Rabbit

Isotype:

IgG

Immunogen Catalog Number:

AG38738

GenBank Accession Number:

NM_000533.4

GeneID (NCBI):

5354

UNIPROT ID:

P60201

Full Name:

proteolipid protein 1

Calculated MW:

30kDa 277aa

Purification Method:

Antigen affinity Purification

Applications

Tested Applications:

IHC, IF-P, Indirect ELISA

Species Specificity:

human, mouse, rat

Background Information

Myelin proteolipid protein is also named PLP1 and Lipophilin. Plp1 is abundantly expressed by oligodendrocytes of the central nervous system (CNS), where it encodes the most abundant protein in CNS myelin (PMID: 19452287). Plp1 expression preferentially occurs during early postnatal development, primarily as the DM20 isoform (PMID: 37293625).

Storage

Storage:

Store at -80°C.

Storage Buffer:

PBS only, pH7.3

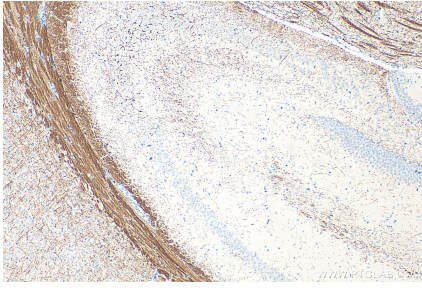
For technical support and original validation data for this product please contact:

T: 1 (888) 4PTGLAB (1-888-478-4522) (toll free in USA), or 1(312) 455-8498 (outside USA)

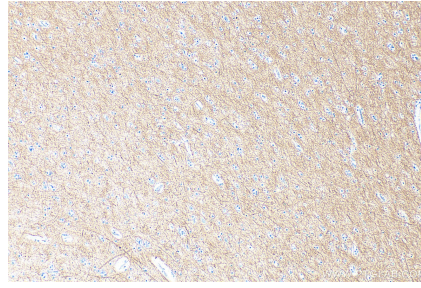
E: proteintech@ptglab.com
W: ptglab.com

This product is exclusively available under Proteintech Group brand and is not available to purchase from any other manufacturer.

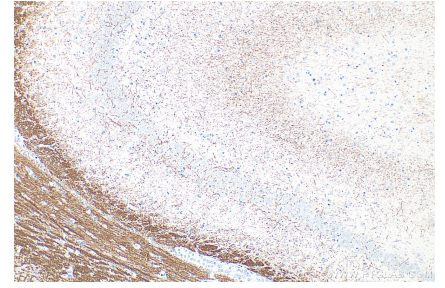
Selected Validation Data



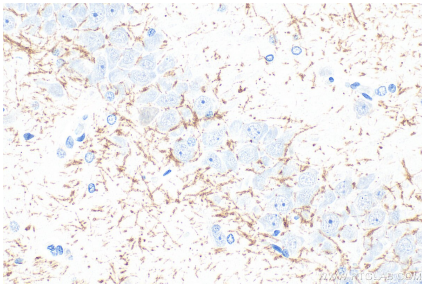
Immunohistochemical analysis of paraffin-embedded mouse brain tissue slide using 33901-1-AP (PLP1 antibody) at dilution of 1:200 (under 10x lens). Heat mediated antigen retrieval with Tris-EDTA buffer (pH 9.0). This data was developed using the same antibody clone with 33901-1-PBS in a different storage buffer formulation.



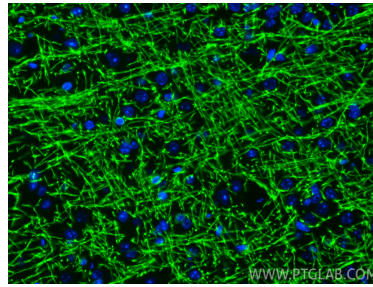
Immunohistochemical analysis of paraffin-embedded human brain tissue slide using 33901-1-AP (PLP1 antibody) at dilution of 1:200 (under 10x lens). Heat mediated antigen retrieval with Tris-EDTA buffer (pH 9.0). This data was developed using the same antibody clone with 33901-1-PBS in a different storage buffer formulation.



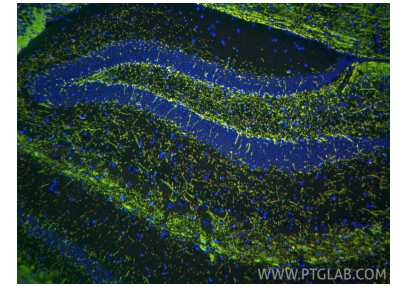
Immunohistochemical analysis of paraffin-embedded rat brain tissue slide using 33901-1-AP (PLP1 antibody) at dilution of 1:200 (under 10x lens). Heat mediated antigen retrieval with Tris-EDTA buffer (pH 9.0). This data was developed using the same antibody clone with 33901-1-PBS in a different storage buffer formulation.



Immunohistochemical analysis of paraffin-embedded rat brain tissue slide using 33901-1-AP (PLP1 antibody) at dilution of 1:200 (under 40x lens). Heat mediated antigen retrieval with Tris-EDTA buffer (pH 9.0). This data was developed using the same antibody clone with 33901-1-PBS in a different storage buffer formulation.



Immunofluorescent analysis of (4% PFA) fixed paraffin-embedded mouse brain tissue using PLP1 antibody (33901-1-AP) at dilution of 1:200 and CoraLite®488-Conjugated Goat Anti-Rabbit IgG(H+L) (SA00013-2). Heat mediated antigen retrieval with Tris-EDTA buffer (pH 9.0). This data was developed using the same antibody clone with 33901-1-PBS in a different storage buffer formulation.



Immunofluorescent analysis of (4% PFA) fixed paraffin-embedded mouse brain tissue using PLP1 antibody (33901-1-AP) at dilution of 1:400 and CoraLite®594-Conjugated Goat Anti-Rabbit IgG(H+L) (SA00013-4), CoraLite® Plus 488 MBP antibody (CL488-10458, green). Heat mediated antigen retrieval with Tris-EDTA buffer (pH 9.0). This data was developed using the same antibody clone with 33901-1-PBS in a different storage buffer formulation.