

For Research Use Only

Calpain 15/SOLH Polyclonal antibody

Catalog Number: 33924-1-AP



Basic Information

Catalog Number:

33924-1-AP

Size:

150ul , Concentration: 450 ug/ml by Nanodrop;

Source:

Rabbit

Isotype:

IgG

Immunogen Catalog Number:

AG40689

GenBank Accession Number:

BC021854

GeneID (NCBI):

6650

UNIPROT ID:

O75808

Full Name:

small optic lobes homolog (Drosophila)

Calculated MW:

117 kDa

Observed MW:

117 kDa

Purification Method:

Antigen affinity Purification

Recommended Dilutions:

WB: 1:500-1:2000

Applications

Tested Applications:

WB, ELISA

Species Specificity:

human

Positive Controls:

WB : Jurkat cells, MCF-7 cells

Background Information

Calpain 15 (also known as CAPN15 and SOLH) is an intracellular cysteine protease belonging to the non-classical small optic lobe (SOL) family of calpains, which plays an important role in developmental processes (PMID: 40238785). Capn15 is expressed at much higher levels during early neuronal development than in the adult (PMID: 32885237). And loss of Capn15 in forebrain excitatory neurons leads to some behavioral deficits including decreased fear generalization (PMID: 37598906).

Storage

Storage:

Store at -20°C. Stable for one year after shipment.

Storage Buffer:

PBS with 0.02% sodium azide and 50% glycerol, pH7.3

Aliquoting is unnecessary for -20°C storage

*** 20ul sizes contain 0.1% BSA

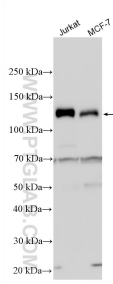
For technical support and original validation data for this product please contact:

T: 1 (888) 4PTGLAB (1-888-478-4522) (toll free in USA), or 1(312) 455-8498 (outside USA)

E: proteintech@ptglab.com
W: ptglab.com

This product is exclusively available under Proteintech Group brand and is not available to purchase from any other manufacturer.

Selected Validation Data



Various lysates were subjected to SDS PAGE followed by western blot with 33924-1-AP (Calpain 15/SOLH antibody) at dilution of 1:1000 incubated at room temperature for 1.5 hours.