

For Research Use Only

# Calpain 15/SOLH Polyclonal antibody, PBS Only

Catalog Number:33924-1-PBS



## Basic Information

<b>Catalog Number:</b> 33924-1-PBS	<b>GenBank Accession Number:</b> BC021854	<b>Purification Method:</b> Antigen affinity Purification
<b>Size:</b> 100ug , Concentration: 1 mg/ml by Nanodrop;	<b>GeneID (NCBI):</b> 6650	
<b>Source:</b> Rabbit	<b>UNIPROT ID:</b> O75808	
<b>Isotype:</b> IgG	<b>Full Name:</b> small optic lobes homolog (Drosophila)	
<b>Immunogen Catalog Number:</b> AG40689	<b>Calculated MW:</b> 117 kDa	
	<b>Observed MW:</b> 117 kDa	

## Applications

**Tested Applications:**  
WB, Indirect ELISA

**Species Specificity:**  
human

## Background Information

Calpain 15 (also known as CAPN15 and SOLH) is an intracellular cysteine protease belonging to the non-classical small optic lobe (SOL) family of calpains, which plays an important role in developmental processes (PMID: 40238785). Capn15 is expressed at much higher levels during early neuronal development than in the adult (PMID: 32885237). And loss of Capn15 in forebrain excitatory neurons leads to some behavioral deficits including decreased fear generalization (PMID: 37598906).

## Storage

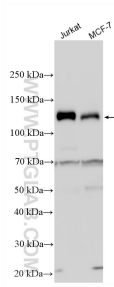
**Storage:**  
Store at -80°C.

**Storage Buffer:**  
PBS only, pH7.3

For technical support and original validation data for this product please contact:  
T: 1 (888) 4PTGLAB (1-888-478-4522) (toll free in USA), or 1(312) 455-8498 (outside USA)      E: proteintech@ptglab.com  
W: ptglab.com

**This product is exclusively available under Proteintech Group brand and is not available to purchase from any other manufacturer.**

## Selected Validation Data



Various lysates were subjected to SDS PAGE followed by western blot with 33924-1-AP (Calpain 15/SOLH antibody) at dilution of 1:1000 incubated at room temperature for 1.5 hours. This data was developed using the same antibody clone with 33924-1-PBS in a different storage buffer formulation.