

For Research Use Only

# JKAMP Polyclonal antibody

Catalog Number:33929-1-AP



## Basic Information

**Catalog Number:**

33929-1-AP

**Size:**

150ul , Concentration: 340 ug/ml by Nanodrop;

**Source:**

Rabbit

**Isotype:**

IgG

**Immunogen Catalog Number:**

AG40886

**GenBank Accession Number:**

BC010359

**GeneID (NCBI):**

51528

**UNIPROT ID:**

Q9P055

**Full Name:**

chromosome 14 open reading frame 100

**Calculated MW:**

311 aa, 35 kDa

**Observed MW:**

33 kDa

**Purification Method:**

Antigen affinity Purification

**Recommended Dilutions:**

WB: 1:500-1:1000

## Applications

**Tested Applications:**

WB, ELISA

**Species Specificity:**

human, mouse

**Positive Controls:**

WB : mouse adipose tissue,

## Background Information

JKAMP (JNK1/MAPK8-Associated Membrane Protein) is a multi-pass transmembrane protein primarily found in the endoplasmic reticulum (ER) and plasma membrane. JKAMP plays a critical role in cellular stress responses by regulating the duration of JNK1 (MAPK8) activity. It competes with phosphatases like MKP5 to sustain JNK1 signaling, thereby influencing stress-induced apoptosis. Additionally, JKAMP is involved in the ubiquitin-dependent ER-associated degradation (ERAD) pathway, helping to degrade misfolded ER proteins by recruiting proteasomal components.

## Storage

**Storage:**

Store at -20°C. Stable for one year after shipment.

**Storage Buffer:**

PBS with 0.02% sodium azide and 50% glycerol, pH7.3

Aliquoting is unnecessary for -20°C storage

**\*\*\* 20ul sizes contain 0.1% BSA**

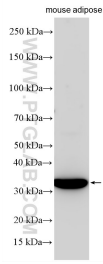
For technical support and original validation data for this product please contact:

T: 1 (888) 4PTGLAB (1-888-478-4522) (toll free in USA), or 1(312) 455-8498 (outside USA)

E: [proteintech@ptglab.com](mailto:proteintech@ptglab.com)  
W: [ptglab.com](http://ptglab.com)

**This product is exclusively available under Proteintech Group brand and is not available to purchase from any other manufacturer.**

## Selected Validation Data



Various lysates were subjected to SDS PAGE followed by western blot with 33929-1-AP (JKAMP antibody) at dilution of 1:600 incubated at room temperature for 1.5 hours.