

For Research Use Only

LSM14A Polyclonal antibody

Catalog Number:33966-1-AP



Basic Information

| | | |
|---|---|--|
| Catalog Number: 33966-1-AP | GenBank Accession Number: BC016842 | Purification Method: Antigen affinity purification |
| Size: 150ul , Concentration: 490 ug/ml by Nanodrop; | GeneID (NCBI): 26065 | Recommended Dilutions: WB: 1:1000-1:6000 IF/ICC: 1:50-1:500 |
| Source: Rabbit | UNIPROT ID: Q8ND56 | |
| IsoType: IgG | Full Name: LSM14A, SCD6 homolog A (S. cerevisiae) | |
| Immunogen Catalog Number: AG41250 | Calculated MW: 463 aa, 51 kDa | |
| | Observed MW: 55 kDa | |

Applications

| | |
|--|--|
| Tested Applications: WB, IF/ICC, ELISA | Positive Controls: |
| Species Specificity: human | WB : A549 cells, Calu-1 cells, HeLa cells, HepG2 cells, L02 cells IF/ICC : HepG2 cells, |

Background Information

LSm14A was originally discovered to be a component of the P-bodies, it is a member of the LSm family of proteins, which have been shown to be involved in RNA processing events. The N terminus of LSM14A is a conserved LSm domain, whereas the C terminus contains two domains called "DFDF box" and "FDF_TFG box", respectively.

Storage

Storage:
Store at -20°C. Stable for one year after shipment.
Storage Buffer:
PBS with 0.02% sodium azide and 50% glycerol, pH7.3
Aliquoting is unnecessary for -20°C storage

*** 20ul sizes contain 0.1% BSA

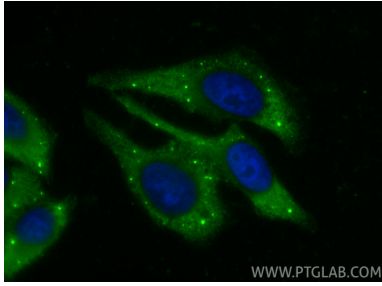
For technical support and original validation data for this product please contact:

T: 1 (888) 4PTGLAB (1-888-478-4522) (toll free in USA), or 1(312) 455-8498 (outside USA)

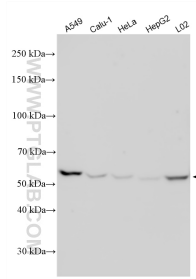
E: proteintech@ptglab.com
W: ptglab.com

This product is exclusively available under Proteintech Group brand and is not available to purchase from any other manufacturer.

Selected Validation Data



Immunofluorescent analysis of (-20°C Ethanol) fixed HepG2 cells using LSM14A antibody (33966-1-AP) at dilution of 1:200 and CoraLite®488-Conjugated Goat Anti-Rabbit IgG(H+L) (SA00013-2).



Various lysates were subjected to SDS PAGE followed by western blot with 33966-1-AP (LSM14A antibody) at dilution of 1:3000 incubated at room temperature for 1.5 hours.