

For Research Use Only

# FAM119B Polyclonal antibody, PBS Only

Catalog Number: 33982-1-PBS



## Basic Information

<b>Catalog Number:</b> 33982-1-PBS	<b>GenBank Accession Number:</b> BC099841	<b>Purification Method:</b> Antigen affinity Purification
<b>Size:</b> 100ug , Concentration: 1 mg/ml by Nanodrop;	<b>GeneID (NCBI):</b> 25895	
<b>Source:</b> Rabbit	<b>UNIPROT ID:</b> Q96AZ1	
<b>Isotype:</b> IgG	<b>Full Name:</b> family with sequence similarity 119, member B	
<b>Immunogen Catalog Number:</b> AG40880	<b>Calculated MW:</b> 226 aa, 25 kDa	
	<b>Observed MW:</b> 25-30 kDa	

## Applications

**Tested Applications:**  
WB, Indirect ELISA

**Species Specificity:**  
human, mouse, rat

## Background Information

EEF1AKMT3 (also known as METTL21B or FAM119B) is a gene that encodes a member of the methyltransferase-like (METTL) protein family. This enzyme functions as a specific lysine methyltransferase, with its primary and well-characterized substrate being eukaryotic translation elongation factor 1 alpha (eEF1A).

## Storage

**Storage:**  
Store at -80°C.

**Storage Buffer:**  
PBS only, pH7.3

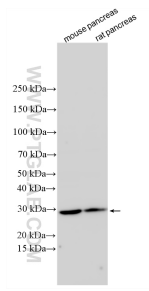
For technical support and original validation data for this product please contact:

T: 1 (888) 4PTGLAB (1-888-478-4522) (toll free in USA), or 1(312) 455-8498 (outside USA)

E: [proteintech@ptglab.com](mailto:proteintech@ptglab.com)  
W: [ptglab.com](http://ptglab.com)

**This product is exclusively available under Proteintech Group brand and is not available to purchase from any other manufacturer.**

## Selected Validation Data



Various lysates were subjected to SDS PAGE followed by western blot with 33982-1-AP (FAM119B antibody) at dilution of 1:1000 incubated at room temperature for 1.5 hours. This data was developed using the same antibody clone with 33982-1-PBS in a different storage buffer formulation.