

For Research Use Only

# CMTM1 Polyclonal antibody

Catalog Number: 34038-1-AP



## Basic Information

<b>Catalog Number:</b> 34038-1-AP	<b>GenBank Accession Number:</b> BC057852	<b>Purification Method:</b> Antigen affinity Purification
<b>Size:</b> 150ul , Concentration: 500 ug/ml by Nanodrop;	<b>GeneID (NCBI):</b> 113540	<b>Recommended Dilutions:</b> WB: 1:1000-1:4000
<b>Source:</b> Rabbit	<b>UNIPROT ID:</b> Q8IZ96	
<b>Isotype:</b> IgG	<b>Full Name:</b> CKLF-like MARVEL transmembrane domain containing 1	
<b>Immunogen Catalog Number:</b> AG40585	<b>Calculated MW:</b> 19 kDa	
	<b>Observed MW:</b> 29 kDa	

## Applications

<b>Tested Applications:</b> WB, ELISA	<b>Positive Controls:</b> WB : mouse testis tissue, rat testis tissue
<b>Species Specificity:</b> human, mouse, rat	

## Background Information

CMTM1 is a MARVEL domain-containing membrane protein enriched in testis and epithelial tissues, with emerging roles in membrane trafficking and cell survival. Its frequent overexpression in multiple cancers and association with aggressive tumor behavior suggest that CMTM1 contributes to tumor progression, potentially by modulating membrane organization or receptor signaling. These properties position CMTM1 as a candidate biomarker and functional regulator in cancer biology (PMID: 33585698, 31542285).

## Storage

**Storage:**  
Store at -20°C. Stable for one year after shipment.  
**Storage Buffer:**  
PBS with 0.02% sodium azide and 50% glycerol, pH7.3  
Aliquoting is unnecessary for -20°C storage

\*\*\* 20ul sizes contain 0.1% BSA

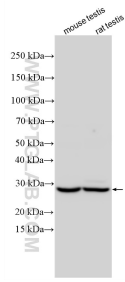
For technical support and original validation data for this product please contact:

T: 1 (888) 4PTGLAB (1-888-478-4522) (toll free in USA), or 1(312) 455-8498 (outside USA)

E: [proteintech@ptglab.com](mailto:proteintech@ptglab.com)  
W: [ptglab.com](http://ptglab.com)

This product is exclusively available under Proteintech Group brand and is not available to purchase from any other manufacturer.

## Selected Validation Data



Various lysates were subjected to SDS PAGE followed by western blot with 34038-1-AP (CMTM1 antibody) at dilution of 1:2000 incubated at room temperature for 1.5 hours.