

For Research Use Only

CMTM1 Polyclonal antibody, PBS Only

Catalog Number: 34038-1-PBS



Basic Information

Catalog Number:

34038-1-PBS

Size:

100ug, Concentration: 1 mg/ml by Nanodrop;

Source:

Rabbit

Isotype:

IgG

Immunogen Catalog Number:

AG40585

GenBank Accession Number:

BC057852

GeneID (NCBI):

113540

UNIPROT ID:

Q8IZ96

Full Name:

CKLF-like MARVEL transmembrane domain containing 1

Calculated MW:

19 kDa

Observed MW:

29 kDa

Purification Method:

Antigen affinity Purification

Applications

Tested Applications:

WB, Indirect ELISA

Species Specificity:

human, mouse, rat

Background Information

CMTM1 is a MARVEL domain-containing membrane protein enriched in testis and epithelial tissues, with emerging roles in membrane trafficking and cell survival. Its frequent overexpression in multiple cancers and association with aggressive tumor behavior suggest that CMTM1 contributes to tumor progression, potentially by modulating membrane organization or receptor signaling. These properties position CMTM1 as a candidate biomarker and functional regulator in cancer biology (PMID: 33585698, 31542285).

Storage

Storage:

Store at -80°C.

Storage Buffer:

PBS only, pH7.3

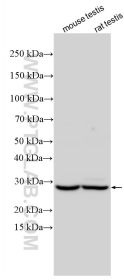
For technical support and original validation data for this product please contact:

T: 1 (888) 4PTGLAB (1-888-478-4522) (toll free in USA), or 1(312) 455-8498 (outside USA)

E: proteintech@ptglab.com
W: ptglab.com

This product is exclusively available under Proteintech Group brand and is not available to purchase from any other manufacturer.

Selected Validation Data



Various lysates were subjected to SDS PAGE followed by western blot with 34038-1-AP (CMTM1 antibody) at dilution of 1:2000 incubated at room temperature for 1.5 hours. This data was developed using the same antibody clone with 34038-1-PBS in a different storage buffer formulation.