

For Research Use Only

KLF11 Polyclonal antibody

Catalog Number: 34052-1-AP

1 Publications



Basic Information

Catalog Number: 34052-1-AP	GenBank Accession Number: BC063286	Purification Method: Antigen affinity Purification
Size: 150ul , Concentration: 450 ug/ml by Nanodrop;	GeneID (NCBI): 8462	Recommended Dilutions: WB: 1:500-1:2000
Source: Rabbit	UNIPROT ID: O14901	
Isotype: IgG	Full Name: Kruppel-like factor 11	
Immunogen Catalog Number: AG40584	Calculated MW: 55 kDa	
	Observed MW: 65 kDa	

Applications

Tested Applications: WB, ELISA	Positive Controls: WB : mouse embryo tissue,
Cited Applications: ChIP	
Species Specificity: human, mouse	
Cited Species: human	

Background Information

KLF11 (Krüppel-like factor 11) belongs to the zinc finger transcription factor family. Its C-terminus contains three tandem C2H2-type zinc finger domains responsible for sequence-specific DNA binding. It regulates transcription by binding to the GC box or CACCC element of target gene promoters, and in the pancreas, it negatively regulates insulin gene expression as a transcriptional repressor. Furthermore, KLF11 participates in cell cycle regulation, apoptosis, and fibrosis pathways, possesses tumor-suppressive functions.

Notable Publications

Author	Pubmed ID	Journal	Application
Xiaodan Liu	40859359	Arthritis Res Ther	ChIP

Storage

Storage:
Store at -20°C. Stable for one year after shipment.
Storage Buffer:
PBS with 0.02% sodium azide and 50% glycerol, pH7.3
Aliquoting is unnecessary for -20°C storage

*** 20ul sizes contain 0.1% BSA

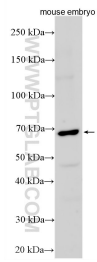
For technical support and original validation data for this product please contact:

T: 1 (888) 4PTGLAB (1-888-478-4522) (toll free in USA), or 1(312) 455-8498 (outside USA)

E: proteintech@ptglab.com
W: ptglab.com

This product is exclusively available under Proteintech Group brand and is not available to purchase from any other manufacturer.

Selected Validation Data



Various lysates were subjected to SDS PAGE followed by western blot with 34052-1-AP (KLF11 antibody) at dilution of 1:1000 incubated at room temperature for 1.5 hours.