

For Research Use Only

COLEC12 Polyclonal antibody

Catalog Number: 34055-1-AP



Basic Information

Catalog Number: 34055-1-AP	GenBank Accession Number: BC060789	Purification Method: Antigen affinity Purification
Size: 150ul , Concentration: 360 µg/ml by Nanodrop;	GeneID (NCBI): 81035	Recommended Dilutions: WB: 1:1000-1:4000
Source: Rabbit	UNIPROT ID: Q5KU26	
Isotype: IgG	Full Name: collectin sub-family member 12	
Immunogen Catalog Number: AG39696	Calculated MW: 82 kDa	
	Observed MW: 140 kDa, 90 kDa, 70 kDa,	

Applications

Tested Applications: WB, ELISA	Positive Controls: WB : Jurkat cells, NIH/3T3 cells
Species Specificity: human, mouse	

Background Information

Colonin-12 (COLEC12), also known as colonin subfamily member 12 or CL-P1, is a pattern recognition receptor belonging to the colonin family. As a scavenger receptor, it plays a role in innate immunity, recognizing pathogen-associated molecular patterns (PAMPs) and damaged self-components. COLEC12 plays a role in pathogen clearance, apoptotic cell recognition, and the regulation of inflammatory responses. COLEC12 is also associated with cardiovascular disease and host defense mechanisms. (PMID: 10224141; 27377710; 11564734; 24058540)

Storage

Storage:
Store at -20°C. Stable for one year after shipment.
Storage Buffer:
PBS with 0.02% sodium azide and 50% glycerol, pH7.3
Aliquoting is unnecessary for -20°C storage

*** 20ul sizes contain 0.1% BSA

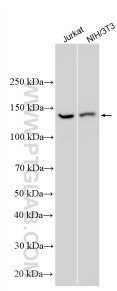
For technical support and original validation data for this product please contact:

T: 1 (888) 4PTGLAB (1-888-478-4522) (toll free in USA), or 1(312) 455-8498 (outside USA)

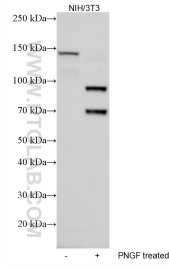
E: proteintech@ptglab.com
W: ptglab.com

This product is exclusively available under Proteintech Group brand and is not available to purchase from any other manufacturer.

Selected Validation Data



Various lysates were subjected to SDS PAGE followed by western blot with 34055-1-AP (COLEC12 antibody) at dilution of 1:2000 incubated at room temperature for 1.5 hours.



Various lysates were subjected to SDS PAGE followed by western blot with 34055-1-AP (COLEC12 antibody) at dilution of 1:2000 incubated at room temperature for 1.5 hours.