

For Research Use Only

# COLEC12 Polyclonal antibody, PBS Only

Catalog Number: 34055-1-PBS



## Basic Information

<b>Catalog Number:</b> 34055-1-PBS	<b>GenBank Accession Number:</b> BC060789	<b>Purification Method:</b> Antigen affinity Purification
<b>Size:</b> 100ug , Concentration: 1 mg/ml by Nanodrop;	<b>GeneID (NCBI):</b> 81035	
<b>Source:</b> Rabbit	<b>UNIPROT ID:</b> Q5KU26	
<b>Isotype:</b> IgG	<b>Full Name:</b> collectin sub-family member 12	
<b>Immunogen Catalog Number:</b> AG39696	<b>Calculated MW:</b> 82 kDa	
	<b>Observed MW:</b> 140 kDa, 90 kDa, 70 kDa,	

## Applications

**Tested Applications:**  
WB, Indirect ELISA

**Species Specificity:**  
human, mouse

## Background Information

Colonin-12 (COLEC12), also known as colonin subfamily member 12 or CL-P1, is a pattern recognition receptor belonging to the colonin family. As a scavenger receptor, it plays a role in innate immunity, recognizing pathogen-associated molecular patterns (PAMPs) and damaged self-components. COLEC12 plays a role in pathogen clearance, apoptotic cell recognition, and the regulation of inflammatory responses. COLEC12 is also associated with cardiovascular disease and host defense mechanisms. (PMID: 10224141; 27377710; 11564734; 24058540)

## Storage

**Storage:**  
Store at -80°C.

**Storage Buffer:**  
PBS only, pH7.3

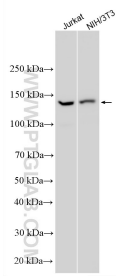
For technical support and original validation data for this product please contact:

T: 1 (888) 4PTGLAB (1-888-478-4522) (toll free in USA), or 1(312) 455-8498 (outside USA)

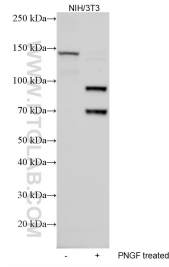
E: [proteintech@ptglab.com](mailto:proteintech@ptglab.com)  
W: [ptglab.com](http://ptglab.com)

**This product is exclusively available under Proteintech Group brand and is not available to purchase from any other manufacturer.**

## Selected Validation Data



Various lysates were subjected to SDS PAGE followed by western blot with 34055-1-AP (COLEC 12 antibody) at dilution of 1:2000 incubated at room temperature for 1.5 hours. This data was developed using the same antibody clone with 34055-1-PBS in a different storage buffer formulation.



Various lysates were subjected to SDS PAGE followed by western blot with 34055-1-AP (COLEC 12 antibody) at dilution of 1:2000 incubated at room temperature for 1.5 hours. This data was developed using the same antibody clone with 34055-1-PBS in a different storage buffer formulation.