

For Research Use Only

# G2E3 Polyclonal antibody

Catalog Number: 34058-1-AP



## Basic Information

**Catalog Number:**

34058-1-AP

**Size:**

150ul, Concentration: 330 ug/ml by Nanodrop;

**Source:**

Rabbit

**Isotype:**

IgG

**Immunogen Catalog Number:**

AG40477

**GenBank Accession Number:**

BC000973

**GeneID (NCBI):**

55632

**UNIPROT ID:**

Q7L622

**Full Name:**

G2/M-phase specific E3 ubiquitin ligase

**Calculated MW:**

706 aa, 81 kDa

**Observed MW:**

80 kDa

**Purification Method:**

Antigen affinity Purification

**Recommended Dilutions:**

IP: 0.5-4.0 ug for 1.0-3.0 mg of total protein lysate  
IHC: 1:50-1:500

## Applications

**Tested Applications:**

IHC, IP, ELISA

**Species Specificity:**

human, mouse

**Note-IHC: suggested antigen retrieval with TE buffer pH 9.0; (\*) Alternatively, antigen retrieval may be performed with citrate buffer pH 6.0**

**Positive Controls:**

IP: mouse brain tissue,

IHC: human kidney tissue,

## Background Information

G2/M-phase specific E3 ubiquitin protein ligase (G2E3) is a cell cycle-regulated E3 ubiquitin ligase that plays a critical role in controlling the G2/M transition. It functions by targeting specific substrates for proteasomal degradation during late G2 and M phases, thereby ensuring proper cell cycle progression. G2E3 contains a RING finger domain, characteristic of E3 ubiquitin ligases, and its expression is tightly regulated in a cell cycle-dependent manner, peaking during G2/M phases. Research has implicated G2E3 in various cellular processes, including DNA damage response and mitotic regulation (PMID: 17239372; PMID: 18511420; PMID: 41068090).

## Storage

**Storage:**

Store at -20°C. Stable for one year after shipment.

**Storage Buffer:**

PBS with 0.02% sodium azide and 50% glycerol, pH7.3

Aliquoting is unnecessary for -20°C storage

\*\*\* 20ul sizes contain 0.1% BSA

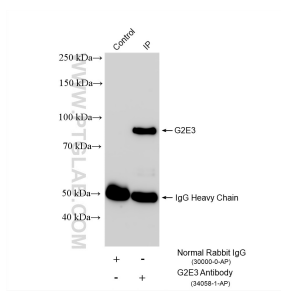
For technical support and original validation data for this product please contact:

T: 1 (888) 4PTGLAB (1-888-478-4522) (toll free in USA), or 1(312) 455-8498 (outside USA)

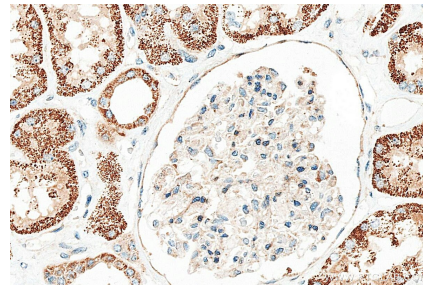
E: proteintech@ptglab.com  
W: ptglab.com

This product is exclusively available under Proteintech Group brand and is not available to purchase from any other manufacturer.

## Selected Validation Data



IP result of anti-G2E3 (IP:34058-1-AP, 4ug; Detection:34058-1-AP 1:500) with mouse brain tissue lysate 1960 ug.



Immunohistochemical analysis of paraffin-embedded human kidney tissue slide using 34058-1-AP (G2E3 antibody) at dilution of 1:200 (under 40x lens). Heat mediated antigen retrieval with Tris-EDTA buffer (pH 9.0).