

For Research Use Only

G2E3 Polyclonal antibody, PBS Only

Catalog Number: 34058-1-PBS



Basic Information

Catalog Number:

34058-1-PBS

Size:

100ug, Concentration: 1 mg/ml by Nanodrop;

Source:

Rabbit

Isotype:

IgG

Immunogen Catalog Number:

AG40477

GenBank Accession Number:

BC000973

GeneID (NCBI):

55632

UNIPROT ID:

Q7L622

Full Name:

G2/M-phase specific E3 ubiquitin ligase

Calculated MW:

706 aa, 81 kDa

Observed MW:

80 kDa

Purification Method:

Antigen affinity Purification

Applications

Tested Applications:

IHC, IP, Indirect ELISA

Species Specificity:

human, mouse

Background Information

G2/M-phase specific E3 ubiquitin protein ligase (G2E3) is a cell cycle-regulated E3 ubiquitin ligase that plays a critical role in controlling the G2/M transition. It functions by targeting specific substrates for proteasomal degradation during late G2 and M phases, thereby ensuring proper cell cycle progression. G2E3 contains a RING finger domain, characteristic of E3 ubiquitin ligases, and its expression is tightly regulated in a cell cycle-dependent manner, peaking during G2/M phases. Research has implicated G2E3 in various cellular processes, including DNA damage response and mitotic regulation (PMID: 17239372; PMID: 18511420; PMID: 41068090).

Storage

Storage:

Store at -80°C.

Storage Buffer:

PBS only, pH7.3

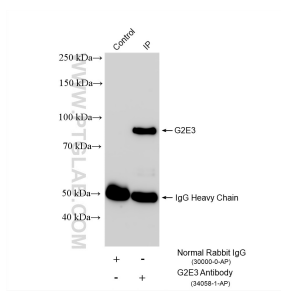
For technical support and original validation data for this product please contact:

T: 1 (888) 4PTGLAB (1-888-478-4522) (toll free in USA), or 1(312) 455-8498 (outside USA)

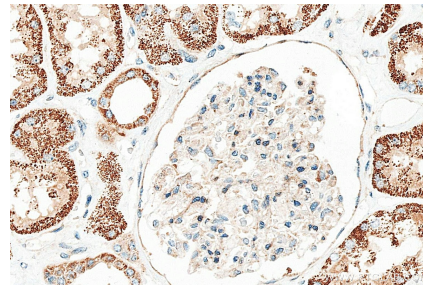
E: proteintech@ptglab.com
W: ptglab.com

This product is exclusively available under Proteintech Group brand and is not available to purchase from any other manufacturer.

Selected Validation Data



IP result of anti-G2E3 (IP:34058-1-AP, 4ug; Detection:34058-1-AP 1:500) with mouse brain tissue lysate 1960 ug. This data was developed using the same antibody clone with 34058-1-PBS in a different storage buffer formulation.



Immunohistochemical analysis of paraffin-embedded human kidney tissue slide using 34058-1-AP (G2E3 antibody) at dilution of 1:200 (under 40x lens). Heat mediated antigen retrieval with Tris-EDTA buffer (pH 9.0). This data was developed using the same antibody clone with 34058-1-PBS in a different storage buffer formulation.