

For Research Use Only

CLEC2/CLEC1B Polyclonal antibody

Catalog Number: 34093-1-AP



Basic Information

Catalog Number: 34093-1-AP	GenBank Accession Number: NM_019985.3	Purification Method: Antigen affinity Purification
Size: 150ul , Concentration: 460 ug/ml by Nanodrop;	GeneID (NCBI): 56760	Recommended Dilutions: WB: 1:500-1:1000
Source: Rabbit	UNIPROT ID: Q9JL99-1	
Isotype: IgG	Full Name: C-type lectin domain family 1, member b	
Immunogen Catalog Number: EG7521	Calculated MW: 26 kDa	
	Observed MW: 32 kDa	

Applications

Tested Applications: WB, ELISA	Positive Controls: WB : mouse lung tissue,
Species Specificity: mouse	

Background Information

C-type lectin-like receptor 2 (CLEC2, also known as CLEC1B) is a type II transmembrane receptor of the C-type lectin superfamily, which are characterized by one or more C-type lectin-like domains (CTLDs) (PMID: 10671229; 34177942). CLEC2 contains a single YXXL/hemi-ITAM (immuno-receptor tyrosine-based activation motif) within its cytoplasmic domain. CLEC-2 is highly expressed on platelets and megakaryocytes and at low levels on other hematopoietic cells, including dendritic cells, neutrophils, monocytes, and macrophages (PMID: 21728173). The first identified ligand for CLEC2 was the platelet-aggregating snake venom protein rhodocytin, and podoplanin has been established as an endogenous ligand for CLEC2 (PMID: 26151067). CLEC2 is involved in thrombosis/hemostasis, tumor metastasis, and lymphangiogenesis (PMID: 20525685). CLEC2 can be glycosylated and has been detected as 32- and 40-kDa forms in platelets with varying degrees of glycosylation (PMID: 16174766; 25150298; 21781241).

Storage

Storage:
Store at -20°C. Stable for one year after shipment.
Storage Buffer:
PBS with 0.02% sodium azide and 50% glycerol, pH7.3
Aliquoting is unnecessary for -20°C storage

*** 20ul sizes contain 0.1% BSA

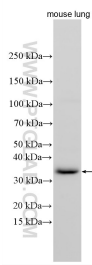
For technical support and original validation data for this product please contact:

T: 1 (888) 4PTGLAB (1-888-478-4522) (toll free in USA), or 1(312) 455-8498 (outside USA)

E: proteintech@ptglab.com
W: ptglab.com

This product is exclusively available under Proteintech Group brand and is not available to purchase from any other manufacturer.

Selected Validation Data



Various lysates were subjected to SDS PAGE followed by western blot with 34093-1-AP (CLEC2/CLEC1B antibody) at dilution of 1:500 incubated at room temperature for 1.5 hours.