

For Research Use Only

PCDH18 Polyclonal antibody, PBS Only

Catalog Number: 34123-1-PBS



Basic Information

Catalog Number:

34123-1-PBS

Size:

100ug, Concentration: 1 mg/ml by Nanodrop;

Source:

Rabbit

Isotype:

IgG

Immunogen Catalog Number:

AG41285

GenBank Accession Number:

BC093815

GeneID (NCBI):

54510

UNIPROT ID:

Q9HCL0

Full Name:

protocadherin 18

Calculated MW:

1135 aa, 126 kDa

Purification Method:

Antigen affinity Purification

Applications

Tested Applications:

IHC, Indirect ELISA

Species Specificity:

human

Background Information

Protocadherin 18 (PCDH18) is a member of the non-clustered protocadherin subfamily within the cadherin superfamily. Encoded by the PCDH18 gene on chromosome 4q28, it contains six to seven extracellular cadherin repeats, a transmembrane domain, and a cytoplasmic tail. PCDH18 is expressed in brain, heart, kidney, lung, and trachea. It plays critical roles in cell-cell adhesion, neuronal migration, axon guidance, and synapse formation during development. Emerging evidence links PCDH18 mutations or dysregulation to neurodevelopmental disorders, including autism spectrum disorder and intellectual disability, as well as to certain cancers (PMID: 22450339; PMID: 29075151; PMID: 28588296).

Storage

Storage:

Store at -80°C.

Storage Buffer:

PBS only, pH7.3

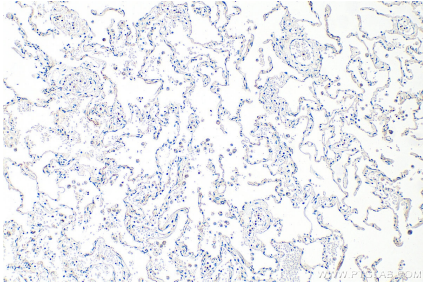
For technical support and original validation data for this product please contact:

T: 1 (888) 4PTGLAB (1-888-478-4522) (toll free in USA), or 1(312) 455-8498 (outside USA)

E: proteintech@ptglab.com
W: ptglab.com

This product is exclusively available under Proteintech Group brand and is not available to purchase from any other manufacturer.

Selected Validation Data



Immunohistochemical analysis of paraffin-embedded human lung tissue slide using 34123-1-AP (PCDH18 antibody) at dilution of 1:200 (under 10x lens). Heat mediated antigen retrieval with Tris-EDTA buffer (pH 9.0). This data was developed using the same antibody clone with 34123-1-PBS in a different storage buffer formulation.