

For Research Use Only

CD160 Polyclonal antibody

Catalog Number: 34143-1-AP



Basic Information

Catalog Number: 34143-1-AP	GenBank Accession Number: NM_001163496.1	Purification Method: Antigen affinity Purification
Size: 150ul , Concentration: 460 ug/ml by Nanodrop;	GeneID (NCBI): 54215	Recommended Dilutions: WB: 1:500-1:2000
Source: Rabbit	UNIPROT ID: O88875	
Isotype: IgG	Full Name: CD160 antigen	
Immunogen Catalog Number: EG2585	Calculated MW: 21kDa	
	Observed MW: 27 kDa	

Applications

Tested Applications: WB, ELISA	Positive Controls: WB : rat spleen tissue, mouse spleen tissue, rat thymus tissue
Species Specificity: mouse, rat	

Background Information

CD160 is a 27 kDa glycosylphosphatidylinositol (GPI)-anchored glycoprotein expressed on natural killer (NK) cells, T cell subsets (like cytotoxic T lymphocytes), and innate lymphoid cells. It functions as an activating or co-stimulatory receptor, depending on its ligand engagement. Its primary ligands are herpesvirus entry mediator (HVEM) and major histocompatibility complex class I chain-related molecules (MICs). The CD160-HVEM interaction plays a critical dual role: it can deliver co-stimulatory signals to enhance NK/T cell cytotoxicity and cytokine production, but it can also inhibit T cell responses by engaging HVEM-associated signaling pathways. Thus, CD160 is a key regulator in immune cell activation, tumor surveillance, and autoimmune pathology (PMID: 21324341, PMID: 24882258, PMID: 36420268, PMID: 38360636).

Storage

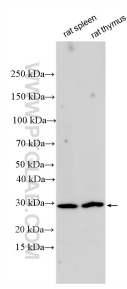
Storage:
Store at -20°C. Stable for one year after shipment.
Storage Buffer:
PBS with 0.02% sodium azide and 50% glycerol, pH7.3
Aliquoting is unnecessary for -20°C storage

*** 20ul sizes contain 0.1% BSA

For technical support and original validation data for this product please contact:
T: 1 (888) 4PTGLAB (1-888-478-4522) (toll free in USA), or 1(312) 455-8498 (outside USA)
E: proteintech@ptglab.com
W: ptglab.com

This product is exclusively available under Proteintech Group brand and is not available to purchase from any other manufacturer.

Selected Validation Data



Various lysates were subjected to SDS PAGE followed by western blot with 34143-1-AP (CD160 antibody) at dilution of 1:1000 incubated at room temperature for 1.5 hours.