

For Research Use Only

# RP11-45B20.2 Polyclonal antibody

Catalog Number: 34185-1-AP



## Basic Information

<b>Catalog Number:</b> 34185-1-AP	<b>GenBank Accession Number:</b> BC137004	<b>Purification Method:</b> Antigen affinity Purification
<b>Size:</b> 150ul , Concentration: 310 ug/ml by Nanodrop;	<b>GeneID (NCBI):</b> 387911	<b>Recommended Dilutions:</b> WB: 1:1000-1:8000
<b>Source:</b> Rabbit	<b>UNIPROT ID:</b> B2RNN3	
<b>Isotype:</b> IgG	<b>Full Name:</b> collagen triple helix repeat-containing	
<b>Immunogen Catalog Number:</b> AG41415	<b>Observed MW:</b> 34-37 kDa	

## Applications

<b>Tested Applications:</b> WB, ELISA	<b>Positive Controls:</b> WB : A-204 cells, MG-63 cells, SH-SY5Y cells, SK-N-SH cells, SKOV-3 cells
<b>Species Specificity:</b> human	

## Background Information

RP11-45B20.2(C1QTNF9B/CTRP9B) is a secreted protein with triple helix structure of collagen and C1q domain, belonging to CTRP family. It may participate in metabolic regulation by activating AMPK/AKT/MAPK signaling pathway, and it may be used as a potential prognostic marker in many cancers. The expression of this protein in retina also suggests that it may be related to eye diseases (such as high myopia). Its observed molecular weight is 34-37 kDa.

## Storage

**Storage:**  
Store at -20°C. Stable for one year after shipment.  
**Storage Buffer:**  
PBS with 0.02% sodium azide and 50% glycerol, pH7.3  
Aliquoting is unnecessary for -20°C storage

\*\*\* 20ul sizes contain 0.1% BSA

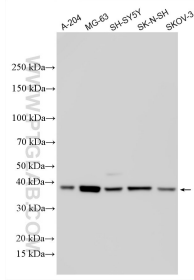
For technical support and original validation data for this product please contact:

T: 1 (888) 4PTGLAB (1-888-478-4522) (toll free in USA), or 1(312) 455-8498 (outside USA)

E: [proteintech@ptglab.com](mailto:proteintech@ptglab.com)  
W: [ptglab.com](http://ptglab.com)

This product is exclusively available under Proteintech Group brand and is not available to purchase from any other manufacturer.

## Selected Validation Data



Various lysates were subjected to SDS PAGE followed by western blot with 34185-1-AP (RP11-45B20.2 antibody) at dilution of 1:4000 incubated at room temperature for 1.5 hours.