

For Research Use Only

JAM2 Polyclonal antibody

Catalog Number: 34226-1-AP



Basic Information

Catalog Number: 34226-1-AP	GenBank Accession Number: NM_023844.5	Purification Method: Antigen affinity Purification
Size: 150ul , Concentration: 440 µg/ml by Nanodrop;	GeneID (NCBI): 67374	Recommended Dilutions: WB: 1:500-1:1000 IHC: 1:50-1:500 IF-P: 1:200-1:800
Source: Rabbit	UNIPROT ID: Q9JI59	
Isotype: IgG	Full Name: junction adhesion molecule 2	
Immunogen Catalog Number: EG6328	Calculated MW: 33 kDa	
	Observed MW: 38 kDa	

Applications

Tested Applications:
WB, IHC, IF-P, ELISA

Species Specificity:
human, mouse, rat

Note-IHC: suggested antigen retrieval with TE buffer pH 9.0; (*) Alternatively, antigen retrieval may be performed with citrate buffer pH 6.0

Positive Controls:

WB : mouse brain tissue, rat brain tissue

IHC : human placenta tissue,

IF-P: human placenta tissue,

Background Information

Junctional adhesion molecules (JAMs) are integral membrane proteins belonging to the immunoglobulin (Ig) superfamily. JAMs are expressed by leukocytes, platelets, endothelial, and epithelial cells and localized at the tight junction of polarized cells and on the cell surface of leukocytes. JAM-2, also known as VE-JAM or JAM-B, is specifically expressed in lymphatic endothelial cells and endothelial venules. JAM2 regulates cell-cell adhesion and signaling by interacting with other tight junction proteins such as PAR-3 and ZO-1 (PMID: 14657270; 24595739; 11739175; 12953056).

Storage

Storage:

Store at -20°C. Stable for one year after shipment.

Storage Buffer:

PBS with 0.02% sodium azide and 50% glycerol, pH7.3

Aliquoting is unnecessary for -20°C storage

***** 20ul sizes contain 0.1% BSA**

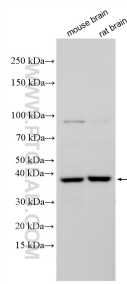
For technical support and original validation data for this product please contact:

T: 1 (888) 4PTGLAB (1-888-478-4522) (toll free in USA), or 1(312) 455-8498 (outside USA)

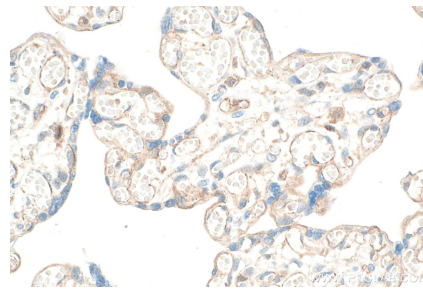
E: proteintech@ptglab.com
W: ptglab.com

This product is exclusively available under Proteintech Group brand and is not available to purchase from any other manufacturer.

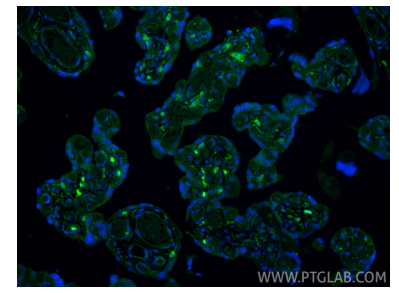
Selected Validation Data



Various lysates were subjected to SDS PAGE followed by western blot with 34226-1-AP (JAM2 antibody) at dilution of 1:500 incubated at room temperature for 1.5 hours.



Immunohistochemical analysis of paraffin-embedded human placenta tissue slide using 34226-1-AP (JAM2 antibody) at dilution of 1:200 (under 40x lens). Heat mediated antigen retrieval with Tris-EDTA buffer (pH 9.0).



Immunofluorescent analysis of (4% PFA) fixed paraffin-embedded human placenta tissue using JAM2 antibody (34226-1-AP) at dilution of 1:400 and CoraLite®488-Conjugated Goat Anti-Rabbit IgG(H+L) (SA00013-2). Heat mediated antigen retrieval with Tris-EDTA buffer (pH 9.0).