

For Research Use Only

# LYVE1 Polyclonal antibody

Catalog Number: 34236-1-AP



## Basic Information

<b>Catalog Number:</b> 34236-1-AP	<b>GenBank Accession Number:</b> NM_053247.4	<b>Purification Method:</b> Antigen affinity Purification
<b>Size:</b> 150ul , Concentration: 460 ug/ml by Nanodrop;	<b>GeneID (NCBI):</b> 114332	<b>Recommended Dilutions:</b> WB: 1:500-1:2000 IHC: 1:500-1:2000 IF-P: 1:50-1:500
<b>Source:</b> Rabbit	<b>UNIPROT ID:</b> Q8BHCO	
<b>Isotype:</b> IgG	<b>Full Name:</b> lymphatic vessel endothelial hyaluronan receptor 1	
<b>Immunogen Catalog Number:</b> EG6367	<b>Calculated MW:</b> 35 kDa	
	<b>Observed MW:</b> 55 kDa, 60-70 kDa	

## Applications

<b>Tested Applications:</b> WB, IHC, IF-P, ELISA	<b>Positive Controls:</b> WB : bEnd.3 cells, mouse lung tissue IHC : mouse liver tissue, mouse colon tissue IF-P : rat liver tissue,
<b>Species Specificity:</b> mouse, rat	
<b>Note-IHC: suggested antigen retrieval with TE buffer pH 9.0; (*) Alternatively, antigen retrieval may be performed with citrate buffer pH 6.0</b>	

## Background Information

LYVE1 is a 322-amino acid type-I integral membrane glycoprotein primarily expressed on lymphatic endothelial cells. LYVE1 is a CD44 homologue. It acts as a receptor and binds to both soluble and immobilized hyaluronan. LYVE1 may function in lymphatic hyaluronan transport and have a role in tumor metastasis.

## Storage

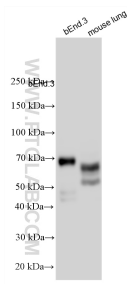
**Storage:**  
Store at -20°C. Stable for one year after shipment.  
**Storage Buffer:**  
PBS with 0.02% sodium azide and 50% glycerol, pH7.3  
Aliquoting is unnecessary for -20°C storage

\*\*\* 20ul sizes contain 0.1% BSA

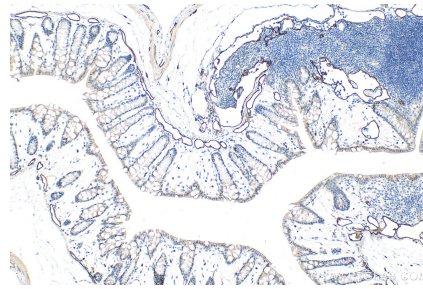
For technical support and original validation data for this product please contact:  
T: 1 (888) 4PTGLAB (1-888-478-4522) (toll free in USA), or 1(312) 455-8498 (outside USA) E: proteintech@ptglab.com W: ptglab.com

This product is exclusively available under Proteintech Group brand and is not available to purchase from any other manufacturer.

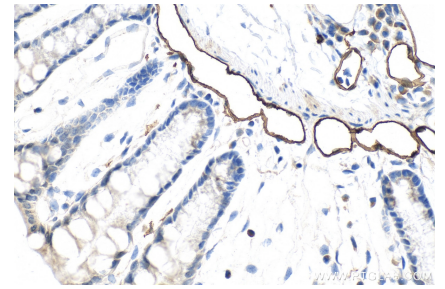
## Selected Validation Data



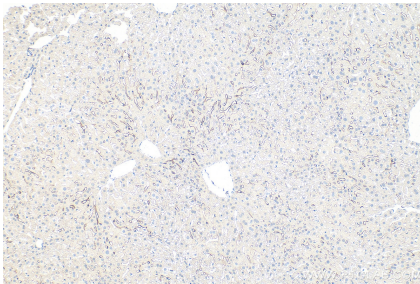
Various lysates were subjected to SDS PAGE followed by western blot with 34236-1-AP (LYVE1 antibody) at dilution of 1:1000 incubated at room temperature for 1.5 hours.



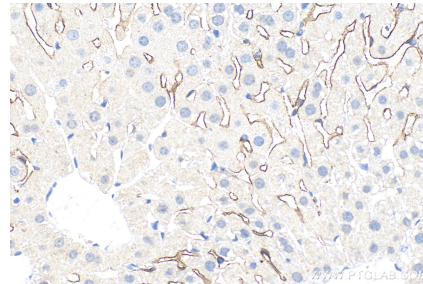
Immunohistochemical analysis of paraffin-embedded mouse colon tissue slide using 34236-1-AP (LyVE-1 antibody) at dilution of 1:400 (under 10x lens). Heat mediated antigen retrieval with Tris-EDTA buffer (pH 9.0).



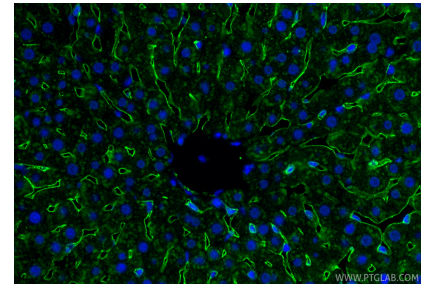
Immunohistochemical analysis of paraffin-embedded mouse colon tissue slide using 34236-1-AP (LyVE-1 antibody) at dilution of 1:400 (under 40x lens). Heat mediated antigen retrieval with Tris-EDTA buffer (pH 9.0).



Immunohistochemical analysis of paraffin-embedded mouse liver tissue slide using 34236-1-AP (LYVE1 antibody) at dilution of 1:1000 (under 10x lens). Heat mediated antigen retrieval with Tris-EDTA buffer (pH 9.0).



Immunohistochemical analysis of paraffin-embedded mouse liver tissue slide using 34236-1-AP (LYVE1 antibody) at dilution of 1:1000 (under 40x lens). Heat mediated antigen retrieval with Tris-EDTA buffer (pH 9.0).



Immunofluorescent analysis of (4% PFA) fixed paraffin-embedded rat liver tissue using LYVE1 antibody (34236-1-AP) at dilution of 1:200 and CoraLite@488-Conjugated Goat Anti-Rabbit IgG(H+L) (SA00013-2). Heat mediated antigen retrieval with Tris-EDTA buffer (pH 9.0).