

For Research Use Only

# CLEC4F Polyclonal antibody

Catalog Number:34238-1-AP



## Basic Information

<b>Catalog Number:</b> 34238-1-AP	<b>GenBank Accession Number:</b> /	<b>Purification Method:</b> Antigen affinity Purification
<b>Size:</b> 150ul , Concentration: 450 ug/ml by Nanodrop;	<b>GeneID (NCBI):</b> 51811	<b>Recommended Dilutions:</b> WB: 1:500-1:2000
<b>Source:</b> Rabbit	<b>UNIPROT ID:</b> P70194	
<b>Isotype:</b> IgG	<b>Full Name:</b> C-type lectin domain family 4, member f	
<b>Immunogen Catalog Number:</b> EG7524	<b>Calculated MW:</b> 61 kDa	
	<b>Observed MW:</b> 72 kDa	

## Applications

<b>Tested Applications:</b> WB, ELISA	<b>Positive Controls:</b> WB : IMR-32 cells, mouse liver tissue, rat liver tissue
<b>Species Specificity:</b> human, mouse, rat	

## Background Information

Mouse CLEC4F (C-Type Lectin Domain Family 4 Member F) is a type II transmembrane glycoprotein primarily expressed on the surface of liver Kupffer cells, serving as a specific marker for liver-resident macrophages. As a pattern recognition receptor, CLEC4F recognizes and binds pathogen-associated sugar structures (such as fungal  $\beta$ -glucans and bacterial lipopolysaccharides) through its C-type lectin domain, mediating pathogen endocytosis and clearance, thereby playing a key role in the liver's innate immune defense.

## Storage

**Storage:**  
Store at -20°C. Stable for one year after shipment.  
**Storage Buffer:**  
PBS with 0.02% sodium azide and 50% glycerol, pH7.3  
Aliquoting is unnecessary for -20°C storage

\*\*\* 20ul sizes contain 0.1% BSA

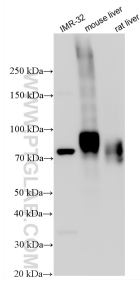
For technical support and original validation data for this product please contact:

T: 1 (888) 4PTGLAB (1-888-478-4522) (toll free in USA), or 1(312) 455-8498 (outside USA)

E: [proteintech@ptglab.com](mailto:proteintech@ptglab.com)  
W: [ptglab.com](http://ptglab.com)

This product is exclusively available under Proteintech Group brand and is not available to purchase from any other manufacturer.

## Selected Validation Data



Various lysates were subjected to SDS PAGE followed by western blot with 34238-1-AP (CLEC4F antibody) at dilution of 1:1000 incubated at room temperature for 1.5 hours.