

For Research Use Only

Mouse CLEC4F Polyclonal antibody, PBS Only

Catalog Number: 34238-1-PBS



Basic Information

Catalog Number: 34238-1-PBS	GenBank Accession Number: /	Purification Method: Antigen affinity Purification
Size: 100ug , Concentration: 1 mg/ml by Nanodrop;	GeneID (NCBI): 51811	
Source: Rabbit	UNIPROT ID: P70194	
Isotype: IgG	Full Name: C-type lectin domain family 4, member f	
Immunogen Catalog Number: EG7524	Calculated MW: 61 kDa	
	Observed MW: 72 kDa	

Applications

Tested Applications:
WB, Indirect ELISA

Species Specificity:
human, mouse, rat

Background Information

Mouse CLEC4F (C-Type Lectin Domain Family 4 Member F) is a type II transmembrane glycoprotein primarily expressed on the surface of liver Kupffer cells, serving as a specific marker for liver-resident macrophages. As a pattern recognition receptor, CLEC4F recognizes and binds pathogen-associated sugar structures (such as fungal β -glucans and bacterial lipopolysaccharides) through its C-type lectin domain, mediating pathogen endocytosis and clearance, thereby playing a key role in the liver's innate immune defense.

Storage

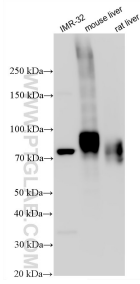
Storage:
Store at -80°C.

Storage Buffer:
PBS only, pH7.3

For technical support and original validation data for this product please contact:
T: 1 (888) 4PTGLAB (1-888-478-4522) (toll free in USA), or 1(312) 455-8498 (outside USA) E: proteintech@ptglab.com
W: ptglab.com

This product is exclusively available under Proteintech Group brand and is not available to purchase from any other manufacturer.

Selected Validation Data



Various lysates were subjected to SDS PAGE followed by western blot with 34238-1-AP (CLEC4F antibody) at dilution of 1:1000 incubated at room temperature for 1.5 hours. This data was developed using the same antibody clone with 34238-1-PBS in a different storage buffer formulation.