

For Research Use Only

# PIWIL2 Polyclonal antibody

Catalog Number: 34244-1-AP **1 Publications**



## Basic Information

<b>Catalog Number:</b> 34244-1-AP	<b>GenBank Accession Number:</b> BC025995	<b>Purification Method:</b> Antigen affinity Purification
<b>Size:</b> 150ul , Concentration: 410 ug/ml by Nanodrop;	<b>GeneID (NCBI):</b> 55124	<b>Recommended Dilutions:</b> WB: 1:500-1:2000
<b>Source:</b> Rabbit	<b>UNIPROT ID:</b> Q8TC59	
<b>Isotype:</b> IgG	<b>Full Name:</b> piwi-like 2 (Drosophila)	
<b>Immunogen Catalog Number:</b> AG38831	<b>Calculated MW:</b> 110 kDa	
	<b>Observed MW:</b> 109 kDa	

## Applications

<b>Tested Applications:</b> WB, ELISA	<b>Positive Controls:</b> WB : mouse testis tissue, rat testis tissue
<b>Cited Applications:</b> WB	
<b>Species Specificity:</b> human, mouse, rat	
<b>Cited Species:</b> rat	

## Background Information

PIWIL2 is a protein-coding gene that belongs to the Argonaute family of proteins, specifically the Piwi subfamily. The gene shows highly biased expression, found predominantly in the adult testis, with lower levels detected in the duodenum and other tissues. But PIWIL2 is widely expressed in a variety of tumors. PIWIL2 functions as an endoribonuclease (" slicer") that plays a central role in the piRNA (PIWI-interacting RNA) pathway . Its primary role is to protect the germline genome by repressing transposable elements (mobile genetic elements or "jumping genes"), thereby preventing their mobilization which could otherwise cause mutations and disrupt gametogenesis. (PMID: 35794855, PMID: 40789164)

## Notable Publications

Author	Pubmed ID	Journal	Application
Jiaqiang Wang	41141922	Burns Trauma	WB

## Storage

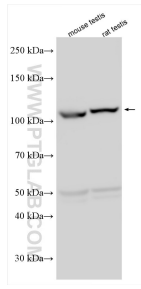
**Storage:**  
Store at -20°C. Stable for one year after shipment.  
**Storage Buffer:**  
PBS with 0.02% sodium azide and 50% glycerol, pH7.3  
Aliquoting is unnecessary for -20°C storage

\*\*\* 20ul sizes contain 0.1% BSA

For technical support and original validation data for this product please contact:  
T: 1 (888) 4PTGLAB (1-888-478-4522) (toll free in USA), or 1(312) 455-8498 (outside USA)  
E: proteintech@ptglab.com  
W: ptglab.com

This product is exclusively available under Proteintech Group brand and is not available to purchase from any other manufacturer.

## Selected Validation Data



Various lysates were subjected to SDS PAGE followed by western blot with 34244-1-AP (PIWIL2 antibody) at dilution of 1:1000 incubated at room temperature for 1.5 hours.