

For Research Use Only

# GLG1 Polyclonal antibody

Catalog Number: 34250-1-AP



## Basic Information

<b>Catalog Number:</b> 34250-1-AP	<b>GenBank Accession Number:</b> BC060822	<b>Purification Method:</b> Antigen affinity Purification
<b>Size:</b> 150ul , Concentration: 370 ug/ml by Nanodrop;	<b>GeneID (NCBI):</b> 2734	<b>Recommended Dilutions:</b> WB: 1:1000-1:8000 IHC: 1:200-1:800 FC (Intra): 0.5 ug per 10 <sup>6</sup> cells in a 100 µl suspension
<b>Source:</b> Rabbit	<b>UNIPROT ID:</b> Q92896	
<b>Isotype:</b> IgG	<b>Full Name:</b> golgi apparatus protein 1	
<b>Immunogen Catalog Number:</b> AG41864	<b>Calculated MW:</b> 135 kDa	
	<b>Observed MW:</b> 150 kDa	

## Applications

<b>Tested Applications:</b> WB, IHC, ELISA	<b>Positive Controls:</b>
<b>Species Specificity:</b> human, mouse, rat	<b>WB :</b> HepG2 cells, L02 cells, SCaBER cells, SiHa cells, mouse colon tissue, rat colon tissue
<b>Note-IHC: suggested antigen retrieval with TE buffer pH 9.0; (*) Alternatively, antigen retrieval may be performed with citrate buffer pH 6.0</b>	<b>IHC :</b> mouse brain tissue,
	<b>FC (Intra) :</b> HepG2 cells,

## Background Information

Golgi apparatus protein 1 (GLG1) is also named CFR1, E-selectin ligand 1 (ESL-1) and MG160. GLG1 is a 150-160 kDa membrane sialoglycoprotein, originally isolated from the Golgi apparatus of rat neurons. Two homologs, the chicken cysteine-rich fibroblast growth factor receptor (CFR) and ESL-1, were identified in embryonic chick and murine myeloid cells, respectively (PMID: 35543162). GLG1 was originally identified as an FGF2 receptor, found in the Golgi complex (PMID:7531823). GLG1, a non-tyrosine kinase FGF receptor, is also regulated by RNA splicing (PMID: 7768993). GLG1 was found due to its significant upregulation in GC and correlation with advanced stages and lymph node metastases (PMID: 41287415).

## Storage

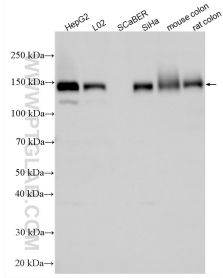
**Storage:**  
Store at -20°C. Stable for one year after shipment.  
**Storage Buffer:**  
PBS with 0.02% sodium azide and 50% glycerol, pH7.3  
Aliquoting is unnecessary for -20°C storage

\*\*\* 20ul sizes contain 0.1% BSA

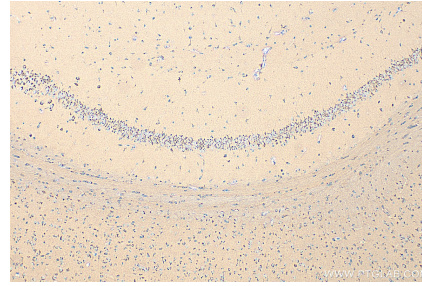
For technical support and original validation data for this product please contact:  
T: 1 (888) 4PTGLAB (1-888-478-4522) (toll free in USA), or 1(312) 455-8498 (outside USA)      E: proteintech@ptglab.com  
W: ptglab.com

This product is exclusively available under Proteintech Group brand and is not available to purchase from any other manufacturer.

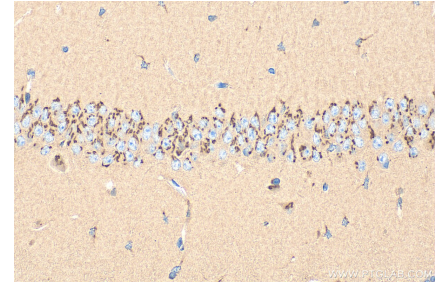
## Selected Validation Data



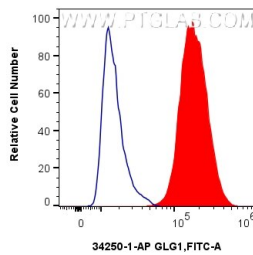
Various lysates were subjected to SDS PAGE followed by western blot with 34250-1-AP (GLG1 antibody) at dilution of 1:4000 incubated at room temperature for 1.5 hours.



Immunohistochemical analysis of paraffin-embedded mouse brain tissue slide using 34250-1-AP (GLG1 antibody) at dilution of 1:400 (under 10x lens). Heat mediated antigen retrieval with Tris-EDTA buffer (pH 9.0).



Immunohistochemical analysis of paraffin-embedded mouse brain tissue slide using 34250-1-AP (GLG1 antibody) at dilution of 1:400 (under 40x lens). Heat mediated antigen retrieval with Tris-EDTA buffer (pH 9.0).



$1 \times 10^6$  HepG2 cells were intracellularly stained with 0.5  $\mu$ g GLG1 Polyclonal antibody (34250-1-AP) and CoraLite<sup>®</sup>488-Conjugated Goat Anti-Rabbit IgG(H+L) (SA00013-2)(red), or 0.5  $\mu$ g Isotype Control (blue). Cells were fixed and permeabilized with Intracellular Flow Cytometry Fixation & Permeabilization Buffer Kit (PF00019).