

For Research Use Only

MTCO1 Polyclonal antibody

Catalog Number: 34285-1-AP **1 Publications**



Basic Information

Catalog Number: 34285-1-AP	GenBank Accession Number: YP_003024028	Purification Method: Antigen affinity Purification
Size: 150ul , Concentration: 420 ug/ml by Nanodrop;	GeneID (NCBI): 4512	Recommended Dilutions: IF/ICC: 1:200-1:800
Source: Rabbit	UNIPROT ID: P00395	
Isotype: IgG	Full Name: cytochrome c oxidase I	
Immunogen Catalog Number: AG33338	Calculated MW: 57 kDa	

Applications

Tested Applications: IF/ICC, ELISA	Positive Controls: IF/ICC : HepG2 cells,
Cited Applications: WB	
Species Specificity: human	
Cited Species: rat	

Background Information

MT-CO1 is a fundamental protein subunit of Cytochrome c Oxidase (Complex IV), the terminal enzyme of the mitochondrial electron transport chain. In humans and most eukaryotes, it is encoded by the mitochondrial DNA (mtDNA). The respiratory chain contains 3 multi subunit complexes succinate dehydrogenase (complex II, CII), ubiquinol-cytochrome c oxidoreductase (cytochrome b-c1 complex, complex III, CIII) and cytochrome c oxidase (complex IV, CIV), that cooperate to transfer electrons derived from NADH and succinate to molecular oxygen, creating an electrochemical gradient over the inner membrane that drives transmembrane transport and the ATP synthase.

Notable Publications

Author	Pubmed ID	Journal	Application
Lauren Pavelich	41750629	Antioxidants (Basel)	WB

Storage

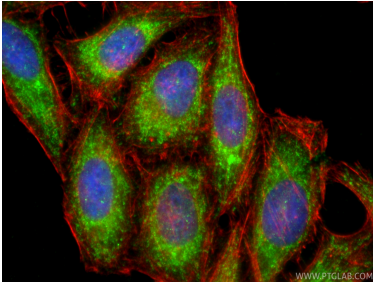
Storage:
Store at -20°C. Stable for one year after shipment.
Storage Buffer:
PBS with 0.02% sodium azide and 50% glycerol, pH7.3
Aliquoting is unnecessary for -20°C storage

*** 20ul sizes contain 0.1% BSA

For technical support and original validation data for this product please contact:
T: 1 (888) 4PTGLAB (1-888-478-4522) (toll free in USA), or 1(312) 455-8498 (outside USA)
E: proteintech@ptglab.com
W: ptglab.com

This product is exclusively available under Proteintech Group brand and is not available to purchase from any other manufacturer.

Selected Validation Data



Immunofluorescent analysis of (-20°C Ethanol) fixed HepG2 cells using MTCO1 antibody (34285-1-AP) at dilution of 1:400 and CoraLite®488-Conjugated Goat Anti-Rabbit IgG(H+L) (SA00013-2), CL594-phalloidin (red).