

For Research Use Only

PAPOLA Polyclonal antibody

Catalog Number: 34287-1-AP



Basic Information

Catalog Number:

34287-1-AP

Size:

150ul , Concentration: 370 ug/ml by Nanodrop;

Source:

Rabbit

Isotype:

IgG

Immunogen Catalog Number:

AG41259

GenBank Accession Number:

BC036014

GeneID (NCBI):

10914

UNIPROT ID:

P51003

Full Name:

poly(A) polymerase alpha

Calculated MW:

82 kDa

Observed MW:

90 kDa

Purification Method:

Antigen affinity Purification

Recommended Dilutions:

WB: 1:500-1:3000

Applications

Tested Applications:

WB, ELISA

Species Specificity:

human

Positive Controls:

WB : HeLa cells, U-251 cells, U-87 MG cells

Background Information

Poly(A) polymerase α (PAPOLA) is the most-studied mammalian poly(A) polymerase. Silencing PAPOLA in MCF-7 and MDA-MB-231 breast cancer cells reduced proliferation and anchorage-independent growth by decreasing steady-state cyclin D1 (CCND1) mRNA and protein levels. PAPOLA is a possible candidate target for the control of tumor growth that is mostly relevant to triple-negative tumors, a group characterized by PAPOLA overexpression and lack of alternative targeted therapies (PMID: 33712453). PAPOLA contains various forms of modifications such as acetylation, phosphorylation, and poly-sulfurization.

Storage

Storage:

Store at -20°C . Stable for one year after shipment.

Storage Buffer:

PBS with 0.02% sodium azide and 50% glycerol, pH7.3

Aliquoting is unnecessary for -20°C storage

*** 20ul sizes contain 0.1% BSA

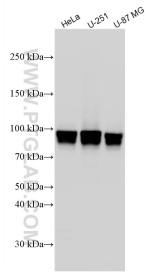
For technical support and original validation data for this product please contact:

T: 1 (888) 4PTGLAB (1-888-478-4522) (toll free in USA), or 1(312) 455-8498 (outside USA)

E: proteintech@ptglab.com
W: ptglab.com

This product is exclusively available under Proteintech Group brand and is not available to purchase from any other manufacturer.

Selected Validation Data



Various lysates were subjected to SDS PAGE followed by western blot with 34287-1-AP (PAPOLA antibody) at dilution of 1:1500 incubated at room temperature for 1.5 hours.