

For Research Use Only

PAPOLA Polyclonal antibody, PBS Only

Catalog Number: 34287-1-PBS



Basic Information

Catalog Number:

34287-1-PBS

Size:

100ug, Concentration: 1 mg/ml by Nanodrop;

Source:

Rabbit

Isotype:

IgG

Immunogen Catalog Number:

AG41259

GenBank Accession Number:

BC036014

GeneID (NCBI):

10914

UNIPROT ID:

P51003

Full Name:

poly(A) polymerase alpha

Calculated MW:

82 kDa

Observed MW:

90 kDa

Purification Method:

Antigen affinity Purification

Applications

Tested Applications:

WB, Indirect ELISA

Species Specificity:

human

Background Information

Poly(A) polymerase α (PAPOLA) is the most-studied mammalian poly(A) polymerase. Silencing PAPOLA in MCF-7 and MDA-MB-231 breast cancer cells reduced proliferation and anchorage-independent growth by decreasing steady-state cyclin D1 (CCND1) mRNA and protein levels. PAPOLA is a possible candidate target for the control of tumor growth that is mostly relevant to triple-negative tumors, a group characterized by PAPOLA overexpression and lack of alternative targeted therapies (PMID: 33712453). PAPOLA contains various forms of modifications such as acetylation, phosphorylation, and poly-sulfurization.

Storage

Storage:

Store at -80°C .

Storage Buffer:

PBS only, pH7.3

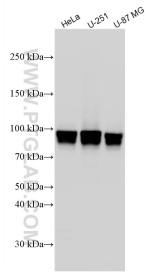
For technical support and original validation data for this product please contact:

T: 1 (888) 4PTGLAB (1-888-478-4522) (toll free in USA), or 1(312) 455-8498 (outside USA)

E: proteintech@ptglab.com
W: ptglab.com

This product is exclusively available under Proteintech Group brand and is not available to purchase from any other manufacturer.

Selected Validation Data



Various lysates were subjected to SDS PAGE followed by western blot with 34287-1-AP (PAPOLA antibody) at dilution of 1:1500 incubated at room temperature for 1.5 hours. This data was developed using the same antibody clone with 34287-1-PBS in a different storage buffer formulation.