

For Research Use Only

EMCN Polyclonal antibody

Catalog Number: 34333-1-AP



Basic Information

Catalog Number: 34333-1-AP	GenBank Accession Number: NM_001163522.1	Purification Method: Antigen affinity Purification
Size: 150ul , Concentration: 420 ug/ml by Nanodrop;	GeneID (NCBI): 59308	Recommended Dilutions: WB: 1:1000-1:4000 IHC: 1:200-1:800 IF-P: 1:50-1:500
Source: Rabbit	UNIPROT ID: Q9R0H2-1	
Isotype: IgG	Full Name: endomucin	
Immunogen Catalog Number: EG6353	Calculated MW: 28 kDa	
	Observed MW: 70-90 kDa	

Applications

Tested Applications:
WB, IHC, IF-P, ELISA

Species Specificity:
human, mouse

Note-IHC: suggested antigen retrieval with TE buffer pH 9.0; (*) Alternatively, antigen retrieval may be performed with citrate buffer pH 6.0

Positive Controls:

WB : HeLa cells, HepG2 cells, L02 cells, mouse heart tissue

IHC : mouse kidney tissue,

IF-P : mouse lung tissue,

Background Information

Endomucin (EMCN), also known as Endomucin 2 or Mucin 14, is a type I integral membrane glycoprotein that is endothelial-specific. EMCN is expressed on the surface of capillaries and venous and is highly expressed in highly vascularized tissues such as heart, kidney and lung (PMID: 29215001). Endomucin plays an important role in cell interaction, molecular cell signaling, angiogenesis and cell migration (PMID: 33532708). Since it is glycosylated, the apparent molecular weight of EMCN could be variable, ranging from 70 kDa to 120 kDa.

Storage

Storage:

Store at -20°C. Stable for one year after shipment.

Storage Buffer:

PBS with 0.02% sodium azide and 50% glycerol, pH7.3

Aliquoting is unnecessary for -20°C storage

*** 20ul sizes contain 0.1% BSA

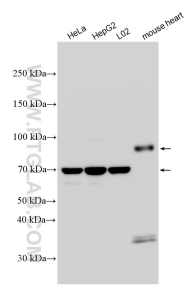
For technical support and original validation data for this product please contact:

T: 1 (888) 4PTGLAB (1-888-478-4522) (toll free in USA), or 1(312) 455-8498 (outside USA)

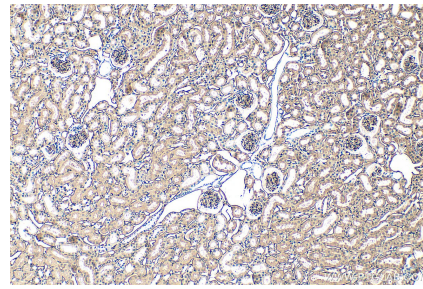
E: proteintech@ptglab.com
W: ptglab.com

This product is exclusively available under Proteintech Group brand and is not available to purchase from any other manufacturer.

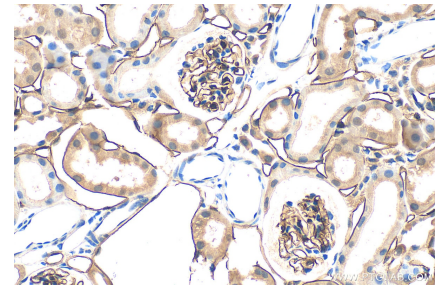
Selected Validation Data



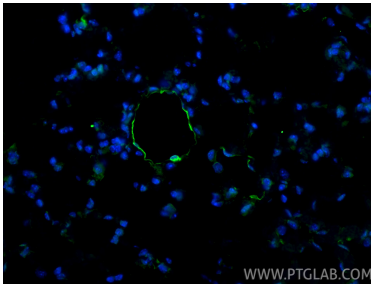
Various lysates were subjected to SDS PAGE followed by western blot with 34333-1-AP (Endomucin antibody) at dilution of 1:2000 incubated at room temperature for 1.5 hours.



Immunohistochemical analysis of paraffin-embedded mouse kidney tissue slide using 34333-1-AP (Endomucin antibody) at dilution of 1:400 (under 10x lens). Heat mediated antigen retrieval with Tris-EDTA buffer (pH 9.0).



Immunohistochemical analysis of paraffin-embedded mouse kidney tissue slide using 34333-1-AP (Endomucin antibody) at dilution of 1:400 (under 40x lens). Heat mediated antigen retrieval with Tris-EDTA buffer (pH 9.0).



Immunofluorescent analysis of (4% PFA) fixed paraffin-embedded mouse lung tissue using EMCN antibody (34333-1-AP) at dilution of 1:200 and CoraLite®488-Conjugated Goat Anti-Rabbit IgG(H+L) (SA00013-2). Heat mediated antigen retrieval with Tris-EDTA buffer (pH 9.0).