

For Research Use Only

LOC221710 Polyclonal antibody

Catalog Number: 34416-1-AP



Basic Information

Catalog Number: 34416-1-AP	GenBank Accession Number: BC032356	Purification Method: Antigen affinity Purification
Size: 150ul , Concentration: 400 µg/ml by Nanodrop;	GeneID (NCBI): 221710	Recommended Dilutions: WB: 1:1000-1:4000
Source: Rabbit	UNIPROT ID: PODJ93	
Isotype: IgG	Full Name: hypothetical protein LOC221710	
Immunogen Catalog Number: AG42308	Observed MW: 19-23 kDa	

Applications

Tested Applications: WB, ELISA	Positive Controls: WB : HCT 116 cells, HCT116, HeLa, Jurkat, K-562 cells
Species Specificity: human	

Background Information

LOC221710 is a provisional gene annotation identifier used in human genomic databases (e.g., RefSeq/NCBI) to denote a predicted or poorly characterized locus for which functional annotation remains limited. Genes labeled with "LOC" typically arise from computational gene prediction, transcriptomic evidence, or incomplete cDNA characterization, and may represent protein-coding candidates, long non-coding RNAs (lncRNAs), or pseudogenes. For LOC221710, currently available data suggest that it lacks well-defined protein structure, biochemical function, and experimentally validated biological roles, and it has not yet been assigned an official gene symbol.

Storage

Storage:
Store at -20°C. Stable for one year after shipment.
Storage Buffer:
PBS with 0.02% sodium azide and 50% glycerol, pH7.3
Aliquoting is unnecessary for -20°C storage

*** 20ul sizes contain 0.1% BSA

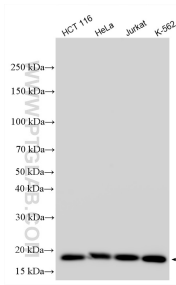
For technical support and original validation data for this product please contact:

T: 1 (888) 4PTGLAB (1-888-478-4522) (toll free in USA), or 1(312) 455-8498 (outside USA)

E: proteintech@ptglab.com
W: ptglab.com

This product is exclusively available under Proteintech Group brand and is not available to purchase from any other manufacturer.

Selected Validation Data



Various lysates were subjected to SDS PAGE followed by western blot with 34416-1-AP (LOC221710 antibody) at dilution of 1:2000 incubated at room temperature for 1.5 hours.