

For Research Use Only

LOC221710 Polyclonal antibody, PBS Only

Catalog Number: 34416-1-PBS



Basic Information

Catalog Number: 34416-1-PBS	GenBank Accession Number: BC032356	Purification Method: Antigen affinity Purification
Size: 100ug , Concentration: 1 mg/ml by Nanodrop;	GeneID (NCBI): 221710	
Source: Rabbit	UNIPROT ID: PODJ93	
Isotype: IgG	Full Name: hypothetical protein LOC221710	
Immunogen Catalog Number: AG42308	Observed MW: 19-23 kDa	

Applications

Tested Applications:
WB, Indirect ELISA

Species Specificity:
human

Background Information

LOC221710 is a provisional gene annotation identifier used in human genomic databases (e.g., RefSeq/NCBI) to denote a predicted or poorly characterized locus for which functional annotation remains limited. Genes labeled with "LOC" typically arise from computational gene prediction, transcriptomic evidence, or incomplete cDNA characterization, and may represent protein-coding candidates, long non-coding RNAs (lncRNAs), or pseudogenes. For LOC221710, currently available data suggest that it lacks well-defined protein structure, biochemical function, and experimentally validated biological roles, and it has not yet been assigned an official gene symbol.

Storage

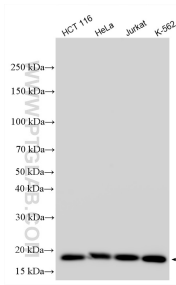
Storage:
Store at -80°C.

Storage Buffer:
PBS only, pH7.3

For technical support and original validation data for this product please contact:
T: 1 (888) 4PTGLAB (1-888-478-4522) (toll free in USA), or 1(312) 455-8498 (outside USA) E: proteintech@ptglab.com W: ptglab.com

This product is exclusively available under Proteintech Group brand and is not available to purchase from any other manufacturer.

Selected Validation Data



Various lysates were subjected to SDS PAGE followed by western blot with 34416-1-AP (LOC221710 antibody) at dilution of 1:2000 incubated at room temperature for 1.5 hours. This data was developed using the same antibody clone with 34416-1-PBS in a different storage buffer formulation.