

For Research Use Only

ADSSL1 Polyclonal antibody, PBS Only

Catalog Number: 34472-1-PBS



Basic Information

Catalog Number: 34472-1-PBS	GenBank Accession Number: BC047904	Purification Method: Antigen affinity Purification
Size: 100ug , Concentration: 1 mg/ml by Nanodrop;	GeneID (NCBI): 122622	
Source: Rabbit	UNIPROT ID: Q8N142	
Isotype: IgG	Full Name: adenylosuccinate synthase like 1	
Immunogen Catalog Number: AG40667	Calculated MW: 457 aa, 50 kDa	
	Observed MW: 45-50 kDa	

Applications

Tested Applications:
WB, Indirect ELISA

Species Specificity:
human, mouse, rat

Background Information

Adenylosuccinate synthase (ADSSL1) is a muscle specific enzyme involved in the purine nucleotide cycle and responsible for the conversion of inosine monophosphate to adenosine monophosphate (PMID: 32331917).

Storage

Storage:
Store at -80°C.

Storage Buffer:
PBS only, pH7.3

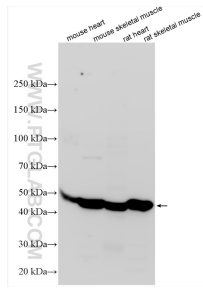
For technical support and original validation data for this product please contact:

T: 1 (888) 4PTGLAB (1-888-478-4522) (toll free in USA), or 1(312) 455-8498 (outside USA)

E: proteintech@ptglab.com
W: ptglab.com

This product is exclusively available under Proteintech Group brand and is not available to purchase from any other manufacturer.

Selected Validation Data



Various lysates were subjected to SDS PAGE followed by western blot with 34472-1-AP (ADSSL1 antibody) at dilution of 1:2000 incubated at room temperature for 1.5 hours. This data was developed using the same antibody clone with 34472-1-PBS in a different storage buffer formulation.