

For Research Use Only

GFP tag Polyclonal antibody

Catalog Number: 50430-2-AP

768 Publications



Basic Information

Catalog Number:

50430-2-AP

Size:

150ul, Concentration: 1000 ug/ml by Nanodrop;

Source:

Rabbit

Isotype:

IgG

Immunogen Catalog Number:

AG2128

GenBank Accession Number:

M62653

GeneID (NCBI):

Full Name:

Calculated MW:

26 kDa

Purification Method:

Antigen affinity purification

Recommended Dilutions:

WB 1:1000-1:4000

IP 0.5-4.0 ug for 1.0-3.0 mg of total protein lysate

IF-P 1:50-1:500

IF/ICC 1:50-1:500

Applications

Tested Applications:

WB, IF/ICC, IF-P, IP, ELISA

Cited Applications:

WB, IHC, IF, IP, CoIP, ChIP, RIP, IP-MS

Species Specificity:

aequorea victoria, recombinant protein

Cited Species:

mouse, pig, yeast

Positive Controls:

WB: recombinant protein, Transfected HEK-293 cells

IP: Transfected HEK-293T cells,

IF-P: mouse brain tissue,

IF/ICC: Transfected HEK-293 cells,

Background Information

Green Fluorescent Proteins (GFPs) encompass a diverse range of proteins carrying a green chromophore, originating from various species and forming different protein lineages. Wildtype GFP consists of 238 amino acid residues (26.9 kDa). GFP was first identified in the jellyfish *Aequorea victoria*. It emits green light with a peak wavelength of 509 nm upon excitation by blue light at 395 nm. When fused with other proteins, GFP serves as a versatile reporter protein e.g. for quantifying expression levels or facilitates visualization of subcellular localization through fluorescence microscopy. This antibody is a rabbit polyclonal antibody, generated against the full-length eGFP protein. It exhibits reactivity towards variants of *Aequorea victoria* GFP, including S65T-GFP, RS-GFP, YFP, CFP, and eGFP.

Notable Publications

Author	Pubmed ID	Journal	Application
Bin Li	28962583	Stem Cell Res Ther	IF
Chao Li	26317901	Oncotarget	
Yuqi Zhai	36168805	Open Biol	IP

Storage

Storage:

Store at -20°C. Stable for one year after shipment.

Storage Buffer:

PBS with 0.02% sodium azide and 50% glycerol, pH7.3

Aliquoting is unnecessary for -20°C storage

*** 20ul sizes contain 0.1% BSA

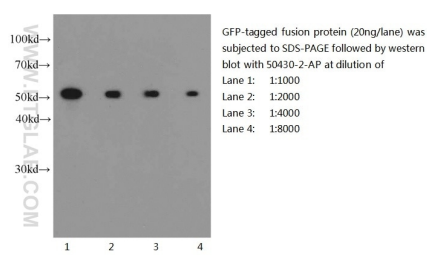
For technical support and original validation data for this product please contact:

T: 1 (888) 4PTGLAB (1-888-478-4522) (toll free in USA), or 1(312) 455-8498 (outside USA)

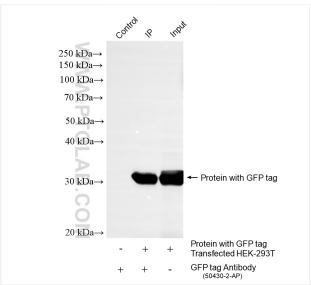
E: proteintech@ptglab.com
W: ptglab.com

This product is exclusively available under Proteintech Group brand and is not available to purchase from any other manufacturer.

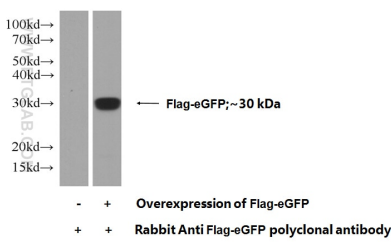
Selected Validation Data



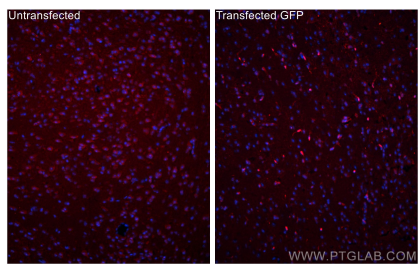
Western blot of eGFP-tagged fusion protein with anti-eGFP-tag (50430-2-AP) at various dilutions.



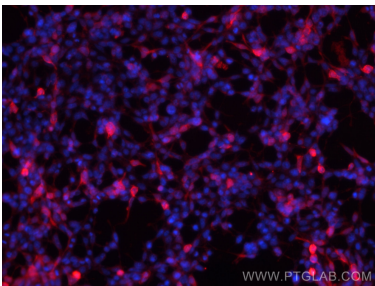
IP result of anti-GFP tag (IP:50430-2-AP, 4ug; Detection:50430-2-AP 1:10000) with Transfected HEK-293T cells lysate 400 ug.



Transfected HEK-293 cells were subjected to SDS PAGE followed by western blot with 50430-2-AP (GFP tag Antibody) at dilution of 1:1000 incubated at room temperature for 1.5 hours.



Immunofluorescent analysis of (4% PFA) fixed paraffin-embedded mouse brain tissue using GFP tag antibody (50430-2-AP) at dilution of 1:200 and CoraLite®594-Conjugated AffiniPure Goat Anti-Rabbit IgG(H+L) (SA00013-2). Heat mediated antigen retrieval with Tris-EDTA buffer (pH 9.0).



Immunofluorescent analysis of (-20°C Ethanol) fixed Transfected HEK-293 cells using GFP tag antibody (50430-2-AP) at dilution of 1:200 and CoraLite®594-Conjugated AffiniPure Goat Anti-Mouse IgG(H+L).