

For Research Use Only

GEFT Polyclonal antibody

Catalog Number: 51004-1-AP

Featured Product

3 Publications



Basic Information

Catalog Number: 51004-1-AP	GenBank Accession Number: BC047559	Purification Method: Antigen affinity purification
Size: 150ul , Concentration: 133 µg/ml by Bradford method using BSA as the standard;	GeneID (NCBI): 115557	Recommended Dilutions: WB 1:500-1:1000
Source: Rabbit	Full Name: RhoA/RAC/CDC42 exchange factor	
Isotype: IgG	Calculated MW: 64 kDa	
	Observed MW: 70 kDa	

Applications

Tested Applications: WB, ELISA	Positive Controls: WB : mouse brain tissue, rat brain tissues
Cited Applications: WB	
Species Specificity: human, mouse, rat	
Cited Species: human, mouse, rat	

Background Information

GEFT, also named as p63RhoGEF, may play a role in actin cytoskeleton reorganization in different tissues since its activation induces formation of actin stress fibers. It works as a guanine nucleotide exchange factor for Rho family of small GTPases. GEFT links specifically G alpha q/11-coupled receptors to RHOA activation. GEFT may be an important regulator of processes involved in axon and dendrite formation. In neurons seems to be an exchange factor primarily for RAC1. It is involved in skeletal myogenesis. GEFT is expressed as three isoforms (64, 53 and 68kDa).

Notable Publications

Author	Pubmed ID	Journal	Application
Julia Strack	25389180	MBio	WB
Siegert Peter P	23696743	PLoS Pathog	WB
Momotani Ko K	21885830	Circ Res	WB

Storage

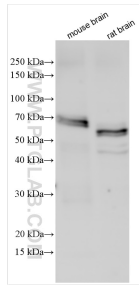
Storage:
Store at -20°C. Stable for one year after shipment.
Storage Buffer:
PBS with 0.02% sodium azide and 50% glycerol pH 7.3.
Aliquoting is unnecessary for -20°C storage

*** 20ul sizes contain 0.1% BSA

For technical support and original validation data for this product please contact:
T: 1 (888) 4PTGLAB (1-888-478-4522) (toll free in USA), or 1(312) 455-8498 (outside USA)
E: proteintech@ptglab.com
W: ptglab.com

This product is exclusively available under Proteintech Group brand and is not available to purchase from any other manufacturer.

Selected Validation Data



Various lysates were subjected to SDS PAGE followed by western blot with 51004-1-AP (GEFT antibody) at dilution of 1:500 incubated at room temperature for 1.5 hours.