

For Research Use Only

# SPTLC2 Polyclonal antibody

Catalog Number: 51012-2-AP

Featured Product

14 Publications



## Basic Information

<b>Catalog Number:</b> 51012-2-AP	<b>GenBank Accession Number:</b> BC005123	<b>Purification Method:</b> Antigen affinity purification
<b>Size:</b> 150ul , Concentration: 800 µg/ml by Nanodrop;	<b>GeneID (NCBI):</b> 9517	<b>Recommended Dilutions:</b> WB 1:1000-1:6000 IHC 1:50-1:500
<b>Source:</b> Rabbit	<b>Full Name:</b> serine palmitoyltransferase, long chain base subunit 2	
<b>Isotype:</b> IgG	<b>Calculated MW:</b> 63 kDa	
	<b>Observed MW:</b> 55-65 kDa	

## Applications

**Tested Applications:**  
IHC, WB, ELISA

**Cited Applications:**  
FC, IF, IHC, WB

**Species Specificity:**  
human, mouse

**Cited Species:**  
human, rat, mouse

**Note-IHC: suggested antigen retrieval with TE buffer pH 9.0; (\*) Alternatively, antigen retrieval may be performed with citrate buffer pH 6.0**

**Positive Controls:**

**WB:** A549 cells, mouse brain tissue, HEK-293 cells, HT-29 cells, HepG2 cells, NIH/3T3 cells

**IHC:** human colon tissue,

## Background Information

### Notable Publications

Author	Pubmed ID	Journal	Application
Pablo Ranea-Robles	34651140	Kidney360	WB
Christina D Camell	26438821	J Biol Chem	WB
Yi-Yu Qi	35391788	Drug Des Devel Ther	IF

## Storage

**Storage:**

Store at -20°C. Stable for one year after shipment.

**Storage Buffer:**

PBS with 0.02% sodium azide and 50% glycerol pH 7.3.

Aliquoting is unnecessary for -20°C storage

\*\*\* 20ul sizes contain 0.1% BSA

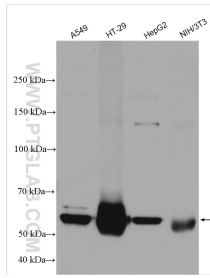
For technical support and original validation data for this product please contact:

T: 1 (888) 4PTGLAB (1-888-478-4522) (toll free in USA), or 1(312) 455-8498 (outside USA)

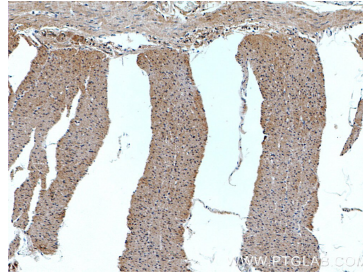
E: proteintech@ptglab.com  
W: ptglab.com

This product is exclusively available under Proteintech Group brand and is not available to purchase from any other manufacturer.

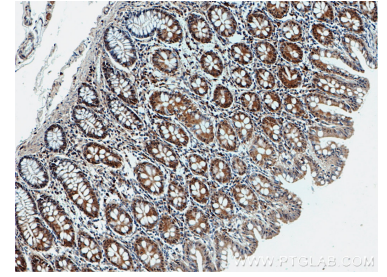
## Selected Validation Data



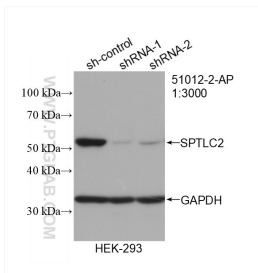
Various lysates were subjected to SDS PAGE followed by western blot with 51012-2-AP (SPTLC2 antibody) at dilution of 1:3000 incubated at room temperature for 1.5 hours.



Immunohistochemical analysis of paraffin-embedded human colon tissue slide using 51012-2-AP (SPTLC2 antibody) at dilution of 1:200 (under 10x lens).



Immunohistochemical analysis of paraffin-embedded human colon tissue slide using 51012-2-AP (SPTLC2 antibody) at dilution of 1:200 (under 0x lens).



WB result of SPTLC2 antibody (51012-2-AP; 1:3000; incubated at room temperature for 1.5 hours) with sh-Control and sh-SPTLC2 transfected HEK-293 cells.