

For Research Use Only

TOM1L1 Polyclonal antibody, PBS Only

Catalog Number: 51017-1-PBS



Basic Information

Catalog Number:

51017-1-PBS

Size:

100ug, Concentration: 1mg/ml by Nanodrop;

Source:

Rabbit

Isotype:

IgG

Immunogen Catalog Number:

AG0502

GenBank Accession Number:

BC029396

GeneID (NCBI):

10040

UNIPROT ID:

O75674

Full Name:

target of myb1 (chicken)-like 1

Calculated MW:

476 aa, 53 kDa

Observed MW:

53 kDa

Purification Method:

Antigen affinity purification

Applications

Tested Applications:

WB, ELISA

Species Specificity:

human

Background Information

Target of Myb-like protein 1 (TOM1L1), also known as Srcasm, belongs to the Tom family. TOM1L1 encodes an adaptor protein characterized by an N-terminal VHS domain and a central GAT domain, which facilitates interactions with clathrin and components of the endosomal sorting machinery. Functionally, TOM1L1 serves as a substrate for Src family kinases, playing a regulatory role in growth factor signaling and membrane trafficking. It is involved in endocytosis, signal transduction, and the negative regulation of mitotic cell division. (PMID: 17977829, PMID: 26899482, PMID: 35238864, PMID: 39548458)

Storage

Storage:

Store at -80°C.

Storage Buffer:

PBS only, pH7.3

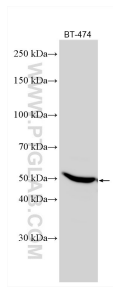
For technical support and original validation data for this product please contact:

T: 1 (888) 4PTGLAB (1-888-478-4522) (toll free in USA), or 1(312) 455-8498 (outside USA)

E: proteintech@ptglab.com
W: ptglab.com

This product is exclusively available under Proteintech Group brand and is not available to purchase from any other manufacturer.

Selected Validation Data



BT-474 cells were subjected to SDS PAGE followed by western blot with 51017-1-AP (TOM1L1 antibody) at dilution of 1:2000 incubated at room temperature for 1.5 hours. This data was developed using the same antibody clone with 51017-1-PBS in a different storage buffer formulation.