

For Research Use Only

RPLPO Polyclonal antibody

Catalog Number: 51019-2-AP



Basic Information

Catalog Number: 51019-2-AP	GenBank Accession Number: BC009867	Purification Method: Antigen affinity purification
Size: 150ul , Concentration: 193 µg/ml by Nanodrop and 193 µg/ml by Bradford method using BSA as the standard;	GeneID (NCBI): 6175	Recommended Dilutions: WB 1:500-1:1000 IHC 1:20-1:200
Source: Rabbit	Full Name: ribosomal protein, large, PO	
Isotype: IgG	Calculated MW: 34 kDa	
	Observed MW: 34 kDa	

Applications

Tested Applications: IHC, WB, ELISA	Positive Controls: WB : HEK-293 cells, IHC : human breast cancer tissue,
Species Specificity: human, mouse, rat	
Note-IHC: suggested antigen retrieval with TE buffer pH 9.0; (*) Alternatively, antigen retrieval may be performed with citrate buffer pH 6.0	

Background Information

Storage

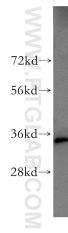
Storage:
Store at -20°C.
Storage Buffer:
PBS with 0.02% sodium azide and 50% glycerol pH 7.3.
Aliquoting is unnecessary for -20°C storage

*** 20ul sizes contain 0.1% BSA

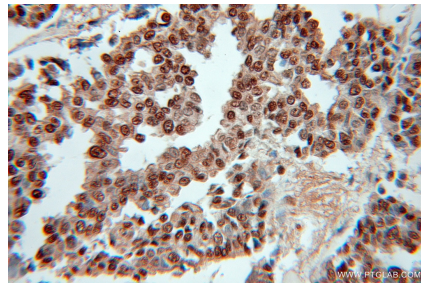
For technical support and original validation data for this product please contact:
T: 1 (888) 4PTGLAB (1-888-478-4522) (toll free in USA), or 1(312) 455-8498 (outside USA) E: proteintech@ptglab.com W: ptglab.com

This product is exclusively available under Proteintech Group brand and is not available to purchase from any other manufacturer.

Selected Validation Data



HEK-293 cells were subjected to SDS PAGE followed by western blot with 51019-2-AP (RPLPO antibody) at dilution of 1:0 incubated at room temperature for 1.5 hours.



Immunohistochemical analysis of paraffin-embedded human breast cancer using 51019-2-AP (RPLPO antibody) at dilution of 1:50 (under 10x lens).