

For Research Use Only

# SEC61B Polyclonal antibody

Catalog Number: 51020-2-AP **4 Publications**



## Basic Information

<b>Catalog Number:</b> 51020-2-AP	<b>GenBank Accession Number:</b> BC001734	<b>Purification Method:</b> Antigen affinity purification
<b>Size:</b> 150ul , Concentration: 450 µg/ml by Nanodrop and 267 µg/ml by Bradford method using BSA as the standard;	<b>GeneID (NCBI):</b> 10952	<b>Recommended Dilutions:</b> WB 1:2000-1:16000 IHC 1:300-1:1200 IF 1:50-1:500
<b>Source:</b> Rabbit	<b>Full Name:</b> Sec61 beta subunit	
<b>Isotype:</b> IgG	<b>Calculated MW:</b> 10 kDa	
	<b>Observed MW:</b> 10-15 kDa	

## Applications

**Tested Applications:**  
IF, IHC, WB, ELISA

**Cited Applications:**  
IF, WB

**Species Specificity:**  
human, mouse, rat

**Cited Species:**  
mouse

**Note-IHC: suggested antigen retrieval with TE buffer pH 9.0; (\*) Alternatively, antigen retrieval may be performed with citrate buffer pH 6.0**

**Positive Controls:**

**WB :** A431 cells, BxPC-3 cells, HEK-293T cells, HeLa cells, HepG2 cells, 3T3-L1 cells, C2C12 cells, RAW 264.7 cells, C6 cells

**IHC :** mouse pancreas tissue, mouse liver tissue

**IF :** mouse pancreas tissue, HepG2 cells

## Background Information

The heteromeric SEC61 complex is composed of alpha, beta and gamma subunits. Oligomers of the SEC61 complex form a transmembrane channel where proteins are translocated across and integrated into the ER membrane (PMID: 10212142). SEC61B is the beta subunit of the SEC61 complex. It has been reported that SEC61B facilitates cotranslational protein transport and interacts with the signal peptidase during translocation (PMID: 9585408).

## Notable Publications

Author	Pubmed ID	Journal	Application
Rocío Pérez-González	31367000	Sci Rep	WB
Anna Pensalfini	34453725	Methods Mol Biol	WB
Rakesh Ganji	36746962	Nat Commun	WB

## Storage

**Storage:**

Store at -20°C. Stable for one year after shipment.

**Storage Buffer:**

PBS with 0.02% sodium azide and 50% glycerol pH 7.3.

Aliquoting is unnecessary for -20°C storage

**\*\*\* 20ul sizes contain 0.1% BSA**

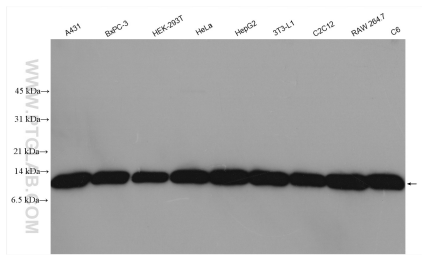
For technical support and original validation data for this product please contact:

T: 1 (888) 4PTGLAB (1-888-478-4522) (toll free in USA), or 1(312) 455-8498 (outside USA)

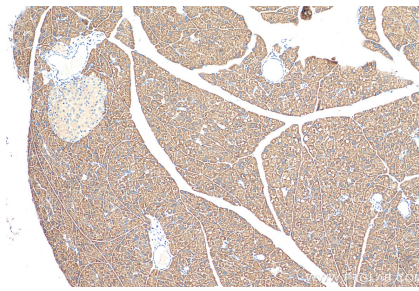
E: [proteintech@ptglab.com](mailto:proteintech@ptglab.com)  
W: [ptglab.com](http://ptglab.com)

**This product is exclusively available under Proteintech Group brand and is not available to purchase from any other manufacturer.**

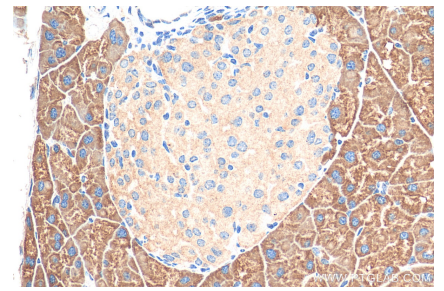
## Selected Validation Data



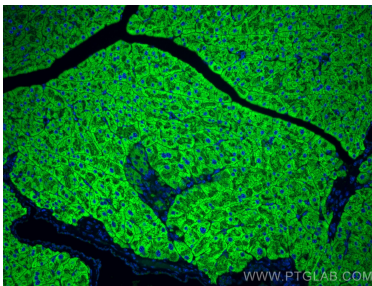
Various lysates were subjected to SDS PAGE followed by western blot with 51020-2-AP (SEC61B antibody) at dilution of 1:8000 incubated at room temperature for 1.5 hours.



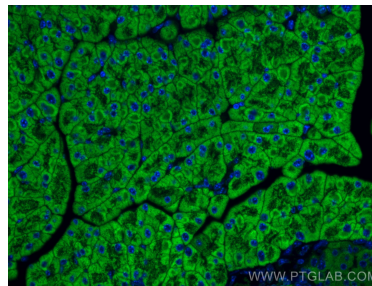
Immunohistochemical analysis of paraffin-embedded mouse pancreas tissue slide using 51020-2-AP (SEC61B antibody) at dilution of 1:600 (under 10x lens). Heat mediated antigen retrieval with Tris-EDTA buffer (pH 9.0).



Immunohistochemical analysis of paraffin-embedded mouse pancreas tissue slide using 51020-2-AP (SEC61B antibody) at dilution of 1:600 (under 40x lens). Heat mediated antigen retrieval with Tris-EDTA buffer (pH 9.0).



Immunofluorescent analysis of (4% PFA) fixed mouse pancreas tissue using SEC61B antibody (51020-2-AP) at dilution of 1:200 and CoraLite®488-Conjugated AffiniPure Goat Anti-Rabbit IgG(H+L).



Immunofluorescent analysis of (4% PFA) fixed mouse pancreas tissue using SEC61B antibody (51020-2-AP) at dilution of 1:200 and CoraLite®488-Conjugated AffiniPure Goat Anti-Rabbit IgG(H+L).