

For Research Use Only

# CRISP3 Polyclonal antibody

Catalog Number: 51022-1-AP



## Basic Information

**Catalog Number:**

51022-1-AP

**Size:**

150ul , Concentration: 133 µg/ml by Bradford method using BSA as the standard;

**Source:**

Rabbit

**Isotype:**

IgG

**GenBank Accession Number:**

BC069602

**GeneID (NCBI):**

10321

**UNIPROT ID:**

P54108

**Full Name:**

cysteine-rich secretory protein 3

**Calculated MW:**

28 kDa

**Purification Method:**

Antigen affinity purification

## Applications

**Tested Applications:**

WB, ELISA

**Species Specificity:**

human

## Background Information

CRISP3, also known as SGP28, is a glycoprotein that belongs to a family of cysteine-rich secretory proteins (CRISPs). CRISP3 was originally discovered in human neutrophils, but transcripts are widely distributed in exocrine glands (salivary glands, pancreas, and prostate) and also found at lower levels in epididymis, ovary, thymus, and colon. CRISP3 is a potential biomarker for prostate cancer.

## Storage

**Storage:**

Store at -20°C.

**Storage Buffer:**

PBS with 0.02% sodium azide and 50% glycerol pH 7.3.

Aliquoting is unnecessary for -20°C storage

\*\*\* 20ul sizes contain 0.1% BSA

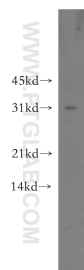
For technical support and original validation data for this product please contact:

T: 1 (888) 4PTGLAB (1-888-478-4522) (toll free in USA), or 1(312) 455-8498 (outside USA)

E: [proteintech@ptglab.com](mailto:proteintech@ptglab.com)  
W: [ptglab.com](http://ptglab.com)

This product is exclusively available under Proteintech Group brand and is not available to purchase from any other manufacturer.

## Selected Validation Data



HEK-293 cells were subjected to SDS PAGE followed by western blot with 51022-1-AP (CRISP3 antibody) at dilution of 1:500 incubated at room temperature for 1.5 hours.