

For Research Use Only

MECR Polyclonal antibody

Catalog Number: 51027-2-AP

6 Publications



Basic Information

Catalog Number:

51027-2-AP

Size:

150ul, Concentration: 600 ug/ml by Nanodrop;

Source:

Rabbit

Isotype:

IgG

Immunogen Catalog Number:

AG0465

GenBank Accession Number:

BC003864

GeneID (NCBI):

26922

UNIPROT ID:

Q9DCS3

Full Name:

mitochondrial trans-2-enoyl-CoA reductase

Calculated MW:

40 kDa

Observed MW:

37-40 kDa

Purification Method:

Antigen affinity purification

Recommended Dilutions:

WB 1:2000-1:10000

IP 0.5-4.0 ug for 1.0-3.0 mg of total protein lysate

IF/ICC 1:50-1:500

Applications

Tested Applications:

WB, IF/ICC, IP, ELISA

Cited Applications:

WB, IHC, IF

Species Specificity:

human, mouse, rat

Cited Species:

human, mouse, yeast

Positive Controls:

WB : mouse heart tissue, mouse skeletal muscle tissue, mouse stomach tissue, rat heart tissue

IP : mouse heart tissue,

IF/ICC : C2C12 cells,

Background Information

Mitochondrial Trans-2-Enoyl-CoA Reductase is abbreviated as MECR, involved in human mitochondrial fatty acid synthesis (mtFAS) as an oxidoreductase. (PMID: 27817865) MECR has molecular weight can be calculated around 37KDa. With immunoprecipitation reaction on mouse heart samples, the IgG heavy chain, dimer of MECR is around 65KDa. Numerous studies have shown disorder of lipid metabolism is closely related with malignance, especially in liver cancer. As further research suggests that MECR has close relationship with cell proliferation, apoptosis, and metastasis (PMID: 31178528)

Notable Publications

Author	Pubmed ID	Journal	Application
Remya R Nair	30266742	J Neurosci	IHC, IF
Remya R Nair	28369354	Hum Mol Genet	WB
Gali Heimer	27817865	Am J Hum Genet	WB

Storage

Storage:

Store at -20°C. Stable for one year after shipment.

Storage Buffer:

PBS with 0.02% sodium azide and 50% glycerol pH 7.3.

Aliquoting is unnecessary for -20°C storage

*** 20ul sizes contain 0.1% BSA

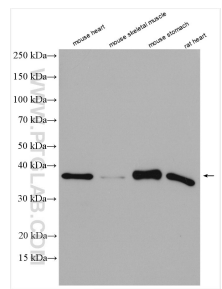
For technical support and original validation data for this product please contact:

T: 1 (888) 4PTGLAB (1-888-478-4522) (toll free in USA), or 1(312) 455-8498 (outside USA)

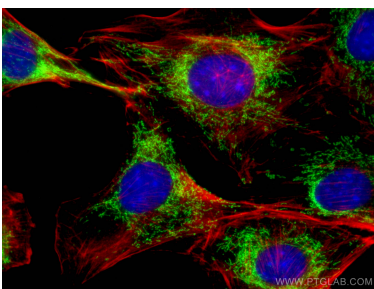
E: proteintech@ptglab.com
W: ptglab.com

This product is exclusively available under Proteintech Group brand and is not available to purchase from any other manufacturer.

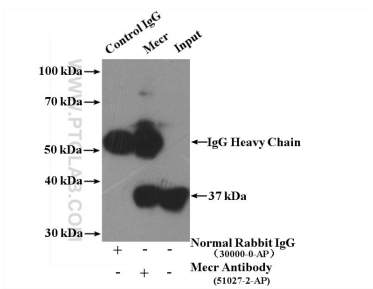
Selected Validation Data



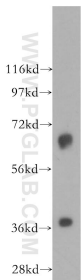
Various lysates were subjected to SDS PAGE followed by western blot with 51027-2-AP (MECR antibody) at dilution of 1:5000 incubated at room temperature for 1.5 hours.



Immunofluorescent analysis of (4% PFA) fixed C2C12 cells using MECR antibody (51027-2-AP) at dilution of 1:200 and CoraLite®488-Conjugated AffiniPure Goat Anti-Rabbit IgG(H+L), CL594-Phalloidin (red).



IP result of anti-MECR (IP:51027-2-AP, 4ug; Detection:51027-2-AP 1:1500) with mouse heart tissue lysate 4800ug.



mouse heart tissue were subjected to SDS PAGE followed by western blot with 51027-2-AP (MECR antibody) at dilution of 1:3000 incubated at room temperature for 1.5 hours.