

For Research Use Only

CTRP6 Polyclonal antibody

Catalog Number: 51030-1-AP



Basic Information

Catalog Number: 51030-1-AP	GenBank Accession Number: BC020551	Purification Method: Antigen affinity purification
Size: 150ul , Concentration: 133 µg/ml by Bradford method using BSA as the standard;	GeneID (NCBI): 114904	Recommended Dilutions: WB 1:500-1:1000
Source: Rabbit	Full Name: C1q and tumor necrosis factor related protein 6	
Isotype: IgG	Calculated MW: 278 aa, 31 kDa	
	Observed MW: 55 kDa	

Applications

Tested Applications: WB, ELISA	Positive Controls: WB : HeLa cells,
Species Specificity: human	

Background Information

Storage

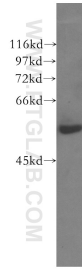
Storage:
Store at -20°C.
Storage Buffer:
PBS with 0.02% sodium azide and 50% glycerol pH 7.3.
Aliquoting is unnecessary for -20°C storage

*** 20ul sizes contain 0.1% BSA

For technical support and original validation data for this product please contact:
T: 1 (888) 4PTGLAB (1-888-478-4522) (toll free in USA), or 1(312) 455-8498 (outside USA)
E: proteintech@ptglab.com
W: ptglab.com

This product is exclusively available under Proteintech Group brand and is not available to purchase from any other manufacturer.

Selected Validation Data



HeLa cells were subjected to SDS PAGE followed by western blot with 51030-1-AP (CTRP6 antibody) at dilution of 1:0 incubated at room temperature for 1.5 hours.