

For Research Use Only

# SLC25A6 Polyclonal antibody

Catalog Number: 51031-1-AP

2 Publications



## Basic Information

### Catalog Number:

51031-1-AP

### Size:

150ul, Concentration: 450 ug/ml by Nanodrop and 233 ug/ml by Bradford method using BSA as the standard;

### Source:

Rabbit

### Isotype:

IgG

### GenBank Accession Number:

BC031912

### GeneID (NCBI):

293

### UNIPROT ID:

P12236

### Full Name:

solute carrier family 25 (mitochondrial carrier; adenine nucleotide translocator), member 6

### Calculated MW:

33 kDa

### Observed MW:

30-33 kDa

### Purification Method:

Antigen affinity purification

### Recommended Dilutions:

WB 1:500-1:1000

IHC 1:50-1:500

## Applications

### Tested Applications:

WB, IHC, ELISA

### Cited Applications:

WB

### Species Specificity:

human, mouse

### Cited Species:

human

**Note-IHC: suggested antigen retrieval with TE buffer pH 9.0; (\*) Alternatively, antigen retrieval may be performed with citrate buffer pH 6.0**

### Positive Controls:

WB: Jurkat cells, HEK-293 cells, K-562 cells, NCI-H1299 cells

IHC: human lung cancer tissue, mouse liver tissue

## Background Information

SLC25A6, also known as ANT3 (adenine nucleotide translocase 3), is a member of the solute carrier family 25, specifically the mitochondrial carrier subfamily. As part of the mitochondrial carrier family, SLC25A6 plays a role in the mitochondrial energy production process by facilitating the exchange of metabolites necessary for oxidative phosphorylation (PMID: 23506884).

## Notable Publications

Author	Pubmed ID	Journal	Application
Mohamed E M Saeed	30066889	Int J Oncol	
Izabela Bednarska	39105088	MethodsX	WB

## Storage

### Storage:

Store at -20°C. Stable for one year after shipment.

### Storage Buffer:

PBS with 0.02% sodium azide and 50% glycerol pH 7.3.

Aliquoting is unnecessary for -20°C storage

\*\*\* 20ul sizes contain 0.1% BSA

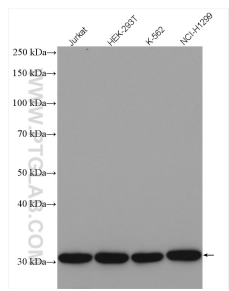
For technical support and original validation data for this product please contact:

T: 1 (888) 4PTGLAB (1-888-478-4522) (toll free in USA), or 1(312) 455-8498 (outside USA)

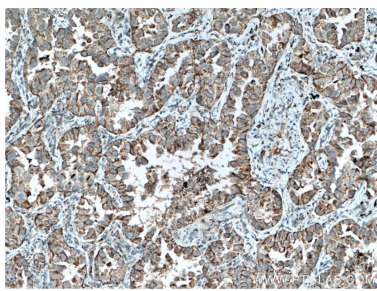
E: [proteintech@ptglab.com](mailto:proteintech@ptglab.com)  
W: [ptglab.com](http://ptglab.com)

This product is exclusively available under Proteintech Group brand and is not available to purchase from any other manufacturer.

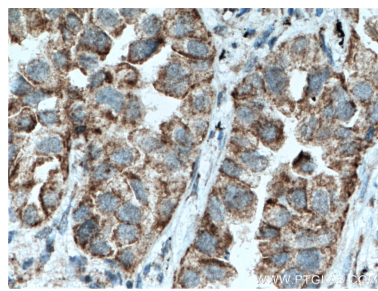
## Selected Validation Data



Various lysates were subjected to SDS PAGE followed by western blot with 51031-1-AP (SLC25A6 antibody) at dilution of 1:800 incubated at room temperature for 1.5 hours.



Immunohistochemical analysis of paraffin-embedded human lung cancer tissue slide using 51031-1-AP (SLC25A6 antibody) at dilution of 1:200 (under 10x lens. Heat mediated antigen retrieval with Tris-EDTA buffer (pH 9.0)).



Immunohistochemical analysis of paraffin-embedded human lung cancer tissue slide using 51031-1-AP (SLC25A6 antibody) at dilution of 1:200 (under 40x lens. Heat mediated antigen retrieval with Tris-EDTA buffer (pH 9.0)).