

For Research Use Only

CRISP3 Polyclonal antibody

Catalog Number: 51039-1-AP



Basic Information

Catalog Number:

51039-1-AP

Size:

150ul , Concentration: 133 µg/ml by Bradford method using BSA as the standard;

Source:

Rabbit

Isotype:

IgG

GenBank Accession Number:

BC069602

GeneID (NCBI):

10321

UNIPROT ID:

P54108

Full Name:

cysteine-rich secretory protein 3

Calculated MW:

28 kDa

Purification Method:

Antigen affinity purification

Applications

Tested Applications:

IHC, ELISA

Species Specificity:

human

Background Information

CRISP3, also known as SGP28, is a glycoprotein that belongs to a family of cysteine-rich secretory proteins (CRISPs). CRISP3 was originally discovered in human neutrophils, but transcripts are widely distributed in exocrine glands (salivary glands, pancreas, and prostate) and also found at lower levels in epididymis, ovary, thymus, and colon. CRISP3 is a potential biomarker for prostate cancer.

Storage

Storage:

Store at -20°C.

Storage Buffer:

PBS with 0.02% sodium azide and 50% glycerol pH 7.3.

Aliquoting is unnecessary for -20°C storage

*** 20ul sizes contain 0.1% BSA

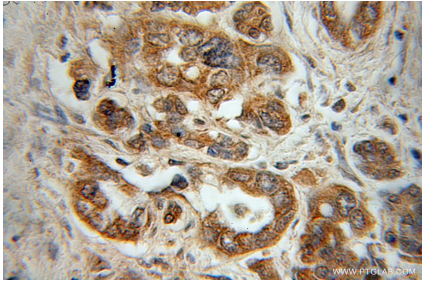
For technical support and original validation data for this product please contact:

T: 1 (888) 4PTGLAB (1-888-478-4522) (toll free in USA), or 1(312) 455-8498 (outside USA)

E: proteintech@ptglab.com
W: ptglab.com

This product is exclusively available under Proteintech Group brand and is not available to purchase from any other manufacturer.

Selected Validation Data



Immunohistochemical analysis of paraffin-embedded human pancreas cancer using 51039-1-AP (CRISP3 antibody) at dilution of 1:50 (under 10x lens).