

For Research Use Only

ELL Polyclonal antibody

Catalog Number: 51044-1-AP

Featured Product

6 Publications



Basic Information

Catalog Number: 51044-1-AP	GenBank Accession Number: BC049195	Purification Method: Antigen affinity purification
Size: 150ul , Concentration: 800 µg/ml by Nanodrop and 500 µg/ml by Bradford method using BSA as the standard;	GeneID (NCBI): 8178	Recommended Dilutions: WB 1:500-1:1000 IHC 1:20-1:200
Source: Rabbit	Full Name: elongation factor RNA polymerase II	
Isotype: IgG	Calculated MW: 500 aa, 68 kDa	
Immunogen Catalog Number: AG0617	Observed MW: 68-80 kDa	

Applications

Tested Applications: IHC, WB, ELISA	Positive Controls:
Cited Applications: CoIP, IP, WB	WB: HeLa cells, HEK-293 cells, HL-60 cells, mouse testis tissue
Species Specificity: human, mouse	IHC: human ovary tumor tissue,
Cited Species: human, mouse	
Note-IHC: suggested antigen retrieval with TE buffer pH 9.0; (*) Alternatively, antigen retrieval may be performed with citrate buffer pH 6.0	

Background Information

ELL is an elongation factor that increase the catalytic rate of RNA polymerase II transcription via suppressing transient pausing by the polymerase at multiple sites along the DNA. Also it's the second elongation factor to be involved in oncogenesis which is a transcription factor regulated by the product of the von Hippel-Lindau tumor suppressor. There are two transcripts variants in mRNA level, one is 4.4kb transcript and the other is 2.8kb transcript.

Notable Publications

Author	Pubmed ID	Journal	Application
Chia-Yu Chung	30353006	Nat Commun	WB, CoIP
Yu Chen	27009366	Nat Commun	WB
Hao Wang	29459712	Oncogene	WB

Storage

Storage:
Store at -20°C.
Storage Buffer:
PBS with 0.02% sodium azide and 50% glycerol pH 7.3.
Aliquoting is unnecessary for -20°C storage

*** 20ul sizes contain 0.1% BSA

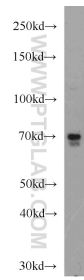
For technical support and original validation data for this product please contact:

T: 1 (888) 4PTGLAB (1-888-478-4522) (toll free in USA), or 1(312) 455-8498 (outside USA)

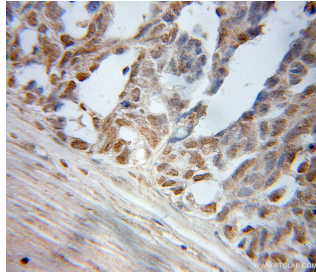
E: proteintech@ptglab.com
W: ptglab.com

This product is exclusively available under Proteintech Group brand and is not available to purchase from any other manufacturer.

Selected Validation Data



HeLa cells were subjected to SDS PAGE followed by western blot with 51044-1-AP (ELL antibody) at dilution of 1:1000 incubated at room temperature for 1.5 hours.



Immunohistochemical analysis of paraffin-embedded human ovary tumor using 51044-1-AP (ELL antibody) at dilution of 1:50 (under 10x lens).