

For Research Use Only

# ELL Polyclonal antibody, PBS Only

Catalog Number: 51044-1-PBS

Featured Product



## Basic Information

**Catalog Number:**

51044-1-PBS

**Size:**

100ug, Concentration: 1 mg/ml by Nanodrop;

**Source:**

Rabbit

**Isotype:**

IgG

**Immunogen Catalog Number:**

AG0617

**GenBank Accession Number:**

BC049195

**GeneID (NCBI):**

8178

**UNIPROT ID:**

P55199

**Full Name:**

elongation factor RNA polymerase II

**Calculated MW:**

500 aa, 68 kDa

**Observed MW:**

68-80 kDa

**Purification Method:**

Antigen affinity purification

## Applications

**Tested Applications:**

WB, IHC, Indirect ELISA

**Species Specificity:**

human, mouse

## Background Information

ELL is an elongation factor that increase the catalytic rate of RNA polymerase II transcription via suppressing transient pausing by the polymerase at multiple sites along the DNA. Also it's the second elongation factor to be involved in oncogenesis which is a transcription factor regulated by the product of the von Hippel-Lindau tumor suppressor. There are two transcripts variants in mRNA level, one is 4.4kb transcript and the other is 2.8kb transcript.

## Storage

**Storage:**

Store at -80°C.

**Storage Buffer:**

PBS only, pH7.3

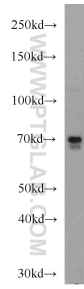
For technical support and original validation data for this product please contact:

T: 1 (888) 4PTGLAB (1-888-478-4522) (toll free in USA), or 1(312) 455-8498 (outside USA)

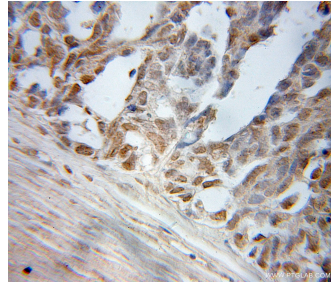
E: [proteintech@ptglab.com](mailto:proteintech@ptglab.com)  
W: [ptglab.com](http://ptglab.com)

**This product is exclusively available under Proteintech Group brand and is not available to purchase from any other manufacturer.**

## Selected Validation Data



HeLa cells were subjected to SDS PAGE followed by western blot with 51044-1-AP (ELL antibody) at dilution of 1:1000 incubated at room temperature for 1.5 hours. This data was developed using the same antibody clone with 51044-1-PBS in a different storage buffer formulation.



Immunohistochemical analysis of paraffin-embedded human ovary tumor using 51044-1-AP (ELL antibody) at dilution of 1:50 (under 10x lens). This data was developed using the same antibody clone with 51044-1-PBS in a different storage buffer formulation.