

For Research Use Only

CD2AP Polyclonal antibody

Catalog Number: 51046-1-AP

Featured Product

8 Publications



Basic Information

Catalog Number:

51046-1-AP

Size:

150ul, Concentration: 900 ug/ml by Nanodrop and 400 ug/ml by Bradford method using BSA as the standard;

Source:

Rabbit

Isotype:

IgG

Immunogen Catalog Number:

AG0622

GenBank Accession Number:

BC157901

GeneID (NCBI):

12488

UNIPROT ID:

Q9JLQ0

Full Name:

CD2-associated protein

Calculated MW:

637 aa, 70 kDa

Observed MW:

71 kDa

Purification Method:

Antigen affinity purification

Recommended Dilutions:

WB 1:5000-1:20000

IP 0.5-4.0 ug for 1.0-3.0 mg of total protein lysate

IF/ICC 1:50-1:500

Applications

Tested Applications:

WB, IF/ICC, IP, ELISA

Cited Applications:

WB, IF, CoIP

Species Specificity:

human, mouse

Cited Species:

human, mouse

Positive Controls:

WB : mouse kidney tissue, mouse testis tissue, mouse brain tissue, Jurkat cells, A431 cells, HeLa cells

IP : mouse brain tissue, HeLa cells

IF/ICC : HepG2 cells, A431 cells

Background Information

CD2 associated protein (CD2AP, also known as CMS) is a scaffolding molecule that acts as an adapter protein between membrane proteins and the actin cytoskeleton (PMID: 10339567). CD2AP also plays a role in epithelial cell junction formation and affects the pathogenesis of Alzheimer's disease (PMID: 22891260; 31440393). Its mutations are associated with sporadic nephrotic syndrome and focal segmental glomerulosclerosis (FSGS) (PMID: 17713465; 19131354).

Notable Publications

Author	Pubmed ID	Journal	Application
Xintong Zheng	33936277	Exp Ther Med	WB
Sei Yoshida	33591954	J Clin Invest	IF
Liang Zhang	39353894	Cell Death Dis	WB, CoIP

Storage

Storage:

Store at -20°C. Stable for one year after shipment.

Storage Buffer:

PBS with 0.02% sodium azide and 50% glycerol pH 7.3.

Aliquoting is unnecessary for -20°C storage

*** 20ul sizes contain 0.1% BSA

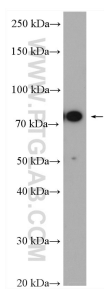
For technical support and original validation data for this product please contact:

T: 1 (888) 4PTGLAB (1-888-478-4522) (toll free in USA), or 1(312) 455-8498 (outside USA)

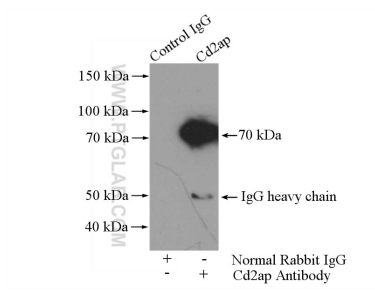
E: proteintech@ptglab.com
W: ptglab.com

This product is exclusively available under Proteintech Group brand and is not available to purchase from any other manufacturer.

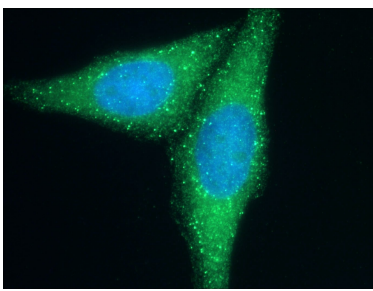
Selected Validation Data



mouse kidney tissue were subjected to SDS PAGE followed by western blot with 51046-1-AP (Cd2ap antibody) at dilution of 1:20000 incubated at room temperature for 1.5 hours.



IP result of anti-Cd2ap (IP:51046-1-AP, 4ug; Detection:51046-1-AP 1:2000) with mouse brain tissue lysate 2560ug.



Immunofluorescent analysis of (4% PFA) fixed HepG2 cells using 51046-1-AP (Cd2ap antibody) at dilution of 1:50 and Alexa Fluor 488-conjugated AffiniPure Goat Anti-Rabbit IgG(H+L).