

For Research Use Only

Galc Polyclonal antibody

Catalog Number: 51049-2-AP



Basic Information

Catalog Number: 51049-2-AP	GenBank Accession Number: BC086671	Purification Method: Antigen affinity purification
Size: 150ul , Concentration: 167 µg/ml by Bradford method using BSA as the standard;	GeneID (NCBI): 14420	Recommended Dilutions: WB 1:500-1:1000 IHC 1:20-1:200
Source: Rabbit	Full Name: galactosylceramidase	
Isotype: IgG	Calculated MW: 77 kDa	
Immunogen Catalog Number: AG0684	Observed MW: 50-55 kDa	

Applications

Tested Applications: IHC, WB, ELISA	Positive Controls:
Species Specificity: human, mouse, rat	WB : A375 cells, human brain tissue, human placenta tissue, mouse brain tissue
Note-IHC: suggested antigen retrieval with TE buffer pH 9.0; (*) Alternatively, antigen retrieval may be performed with citrate buffer pH 6.0	IHC : human prostate cancer tissue,

Background Information

GALC, also named as Galactosylceramidase, belongs to the glycosyl hydrolase 59 family. It hydrolyzes the galactose ester bonds of galactosylceramide, galactosylsphingosine, lactosylceramide, and monogalactosyldiglyceride. It is an enzyme with very low activity responsible for the lysosomal catabolism of galactosylceramide, a major lipid in myelin, kidney and epithelial cells of small intestine and colon. Normal GALC mRNA encodes the 80 kDa precursor, which is processed into 50 and 30 kDa subunits. (PMID:8634707)

Storage

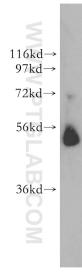
Storage:
Store at -20°C.
Storage Buffer:
PBS with 0.02% sodium azide and 50% glycerol pH 7.3.
Aliquoting is unnecessary for -20°C storage

*** 20ul sizes contain 0.1% BSA

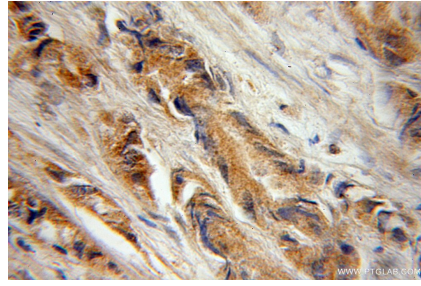
For technical support and original validation data for this product please contact:
T: 1 (888) 4PTGLAB (1-888-478-4522) (toll free in USA), or 1(312) 455-8498 (outside USA)
E: proteintech@ptglab.com
W: ptglab.com

This product is exclusively available under Proteintech Group brand and is not available to purchase from any other manufacturer.

Selected Validation Data



A375 cells were subjected to SDS PAGE followed by western blot with 51049-2-AP (GalC antibody) at dilution of 1:300 incubated at room temperature for 1.5 hours.



Immunohistochemical analysis of paraffin-embedded human prostate cancer using 51049-2-AP (GalC antibody) at dilution of 1:50 (under 10x lens).