

For Research Use Only

PHF6 Polyclonal antibody

Catalog Number: 51062-1-AP

1 Publications



Basic Information

Catalog Number: 51062-1-AP	GenBank Accession Number: BC005994	Purification Method: Antigen affinity purification
Size: 150ul , Concentration: 800 ug/ml by Nanodrop;	GeneID (NCBI): 84295	Recommended Dilutions: WB 1:20000-1:100000
Source: Rabbit	UNIPROT ID: Q8IWS0	IHC 1:20-1:200
Isotype: IgG	Full Name: PHD finger protein 6	IF/ICC 1:50-1:500
Immunogen Catalog Number: AG2102	Calculated MW: 365aa,41 kDa; 312aa,35 kDa	
	Observed MW: 41 kDa	

Applications

Tested Applications: WB, IHC, IF/ICC, ELISA	Positive Controls:
Cited Applications: WB	WB : HeLa cells, HepG2 cells, K-562 cells
Species Specificity: human, mouse	IHC : human ovary tumor tissue, human cervical cancer tissue
Cited Species: human	IF/ICC : HeLa cells,
Note-IHC: suggested antigen retrieval with TE buffer pH 9.0; (*) Alternatively, antigen retrieval may be performed with citrate buffer pH 6.0	

Background Information

PHF6 protein is highly conserved in vertebrates. Structurally, PHF6 protein contains two plant homeodomain (PHD)-like zinc fingers, two nuclear localization sequences and a nucleolar localization sequence, suggesting that PHF6 may play a role in the regulation of transcription. PHD zinc fingers are structurally conserved modules that interact with chromatin or mediate protein-protein interactions. PHF6 associates with subunits of the PAF1 transcription elongation complex including PAF1, LEO1, CTR9 and CDC73. The interaction of PHF6 with the PAF1 complex plays a critical role in PHF6 function in neuronal migration in the cerebral cortex.

Notable Publications

Author	Pubmed ID	Journal	Application
Xiang Gao	35780573	Leuk Res	WB

Storage

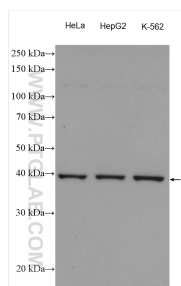
Storage:
Store at -20°C. Stable for one year after shipment.
Storage Buffer:
PBS with 0.02% sodium azide and 50% glycerol pH 7.3.
Aliquoting is unnecessary for -20°C storage

*** 20ul sizes contain 0.1% BSA

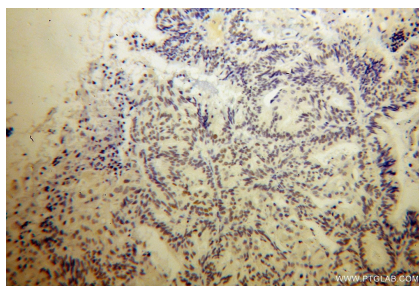
For technical support and original validation data for this product please contact:
T: 1 (888) 4PTGLAB (1-888-478-4522) (toll free in USA), or 1(312) 455-8498 (outside USA)
E: proteintech@ptglab.com
W: ptglab.com

This product is exclusively available under Proteintech Group brand and is not available to purchase from any other manufacturer.

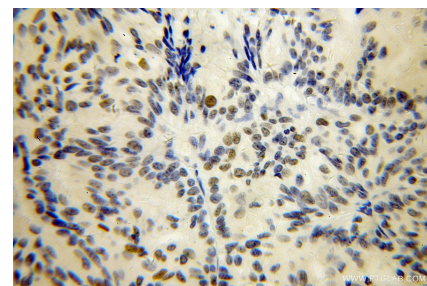
Selected Validation Data



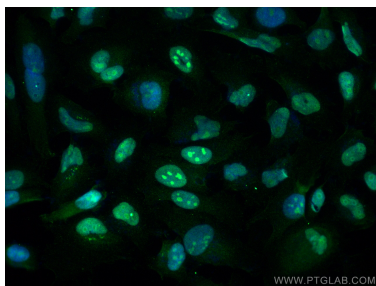
Various lysates were subjected to SDS PAGE followed by western blot with 51062-1-AP (PHF6 antibody) at dilution of 1:64000 incubated at room temperature for 1.5 hours.



Immunohistochemical analysis of paraffin-embedded human ovary tumor using 51062-1-AP (PHF6 antibody) at dilution of 1:50 (under 10x lens).



Immunohistochemical analysis of paraffin-embedded human ovary tumor using 51062-1-AP (PHF6 antibody) at dilution of 1:50 (under 40x lens).



Immunofluorescent analysis of (4% PFA) fixed HeLa cells using PHF6 antibody (51062-1-AP) at dilution of 1:200 and Multi-rAb Coralite® Plus 488-Goat Anti-Rabbit Recombinant Secondary Antibody (H+L) (RGAR002).