

For Research Use Only

ERK1/2 Polyclonal antibody

Catalog Number: 51068-1-AP **27 Publications**



Basic Information

Catalog Number: 51068-1-AP	GenBank Accession Number: BC017832	Purification Method: Antigen affinity purification
Size: 150ul , Concentration: 800 µg/ml by Nanodrop;	GeneID (NCBI): 5594	Recommended Dilutions: WB 1:5000-1:50000 IHC 1:100-1:400 IF 1:50-1:500
Source: Rabbit	UNIPROT ID: P28482	
Isotype: IgG	Full Name: mitogen-activated protein kinase 1	
	Calculated MW: 360 aa, 41 kDa	
	Observed MW: 38-44 kDa	

Applications

Tested Applications: FC, IF, IHC, WB, ELISA	Positive Controls: WB : HEK-293T cells, mouse brain tissue, Jurkat cells, NIH/3T3 cells, mouse brain cells, rat brain cells, rat skin tissue IHC : human cervical cancer tissue, IF : HeLa cells,
Cited Applications: WB,IHC	
Species Specificity: human, mouse, rat	
Cited Species: human, rat, mouse	

Note-IHC: suggested antigen retrieval with TE buffer pH 9.0; (*) Alternatively, antigen retrieval may be performed with citrate buffer pH 6.0

Background Information

ERK1 and ERK2 belongs to the protein kinase superfamily. It is involved in both the initiation and regulation of meiosis, mitosis, and postmitotic functions in differentiated cells by phosphorylating a number of transcription factors such as ELK-1. ERK1/2 catalyzed the reaction: ATP + a protein = ADP + a phosphoprotein. It is activated by tyrosine phosphorylation in response to INS and NGF. This antibody can recognize both ERK1 and ERK2 with the molecular mass of 38-44 kDa.

Notable Publications

Author	Pubmed ID	Journal	Application
Hiroyuki Tateyama	31520477	Immunology	
Min Chen	36216079	Biochem Pharmacol	WB
Jinbiao He	36278226	Front Pharmacol	WB

Storage

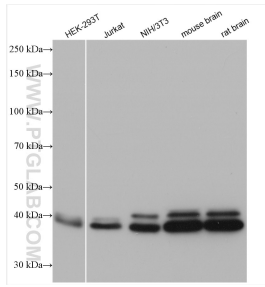
Storage:
Store at -20°C. Stable for one year after shipment.
Storage Buffer:
PBS with 0.02% sodium azide and 50% glycerol pH 7.3.
Aliquoting is unnecessary for -20°C storage

*** 20ul sizes contain 0.1% BSA

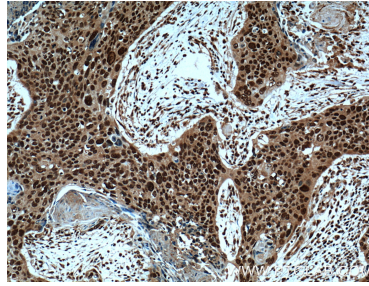
For technical support and original validation data for this product please contact:
T: 1 (888) 4PTGLAB (1-888-478-4522) (toll free in USA), or 1(312) 455-8498 (outside USA)
E: proteintech@ptglab.com
W: ptglab.com

This product is exclusively available under Proteintech Group brand and is not available to purchase from any other manufacturer.

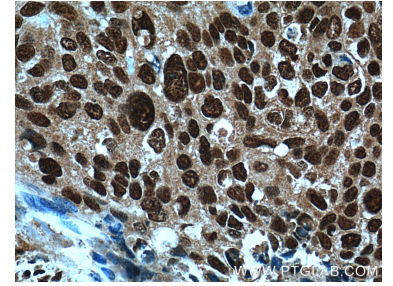
Selected Validation Data



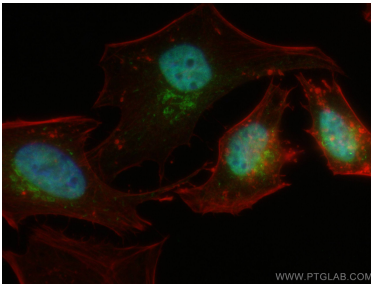
Various lysates were subjected to SDS PAGE followed by western blot with 51068-1-AP (ERK1/2 antibody) at dilution of 1:10000 incubated at room temperature for 1.5 hours.



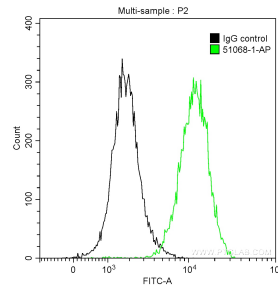
Immunohistochemical analysis of paraffin-embedded human cervical cancer tissue slide using 51068-1-AP (ERK1/2 Antibody) at dilution of 1:200 (under 10x lens). Heat mediated antigen retrieval with Tris-EDTA buffer (pH 9.0).



Immunohistochemical analysis of paraffin-embedded human cervical cancer tissue slide using 51068-1-AP (ERK1/2 Antibody) at dilution of 1:200 (under 40x lens). Heat mediated antigen retrieval with Tris-EDTA buffer (pH 9.0).



Immunofluorescent analysis of (4% PFA) fixed HeLa cells using ERK1/2 antibody (51068-1-AP) at dilution of 1:200 and CoraLite@488-Conjugated AffiniPure Goat Anti-Rabbit IgG(H+L), CL594-Phalloidin (red).



1×10^6 HeLa cells were intracellularly stained with 0.2 ug Anti-Human ERK1/2 (51068-1-AP) and CoraLite@488-Conjugated AffiniPure Goat Anti-Rabbit IgG(H+L) at dilution 1:1000 (green), and 0.2 ug Control Antibody. Cells were fixed with 90% MeOH.