

For Research Use Only

STAT6 Polyclonal antibody

Catalog Number: 51073-1-AP

Featured Product

21 Publications



Basic Information

Catalog Number: 51073-1-AP	GenBank Accession Number: BC075852	Purification Method: Antigen affinity purification
Size: 150ul , Concentration: 500 µg/ml by Nanodrop;	GeneID (NCBI): 6778	Recommended Dilutions: WB 1:1000-1:8000 IHC 1:20-1:200
Source: Rabbit	Full Name: signal transducer and activator of transcription 6, interleukin-4 induced	
Isotype: IgG	Calculated MW: 94 kDa	
	Observed MW: 100-110 kDa	

Applications

Tested Applications:
IHC, WB, ELISA

Cited Applications:
IF, IHC, RIP, WB

Species Specificity:
human, mouse, rat

Cited Species:
human, rat, mouse

Note-IHC: suggested antigen retrieval with TE buffer pH 9.0; (*) Alternatively, antigen retrieval may be performed with citrate buffer pH 6.0

Positive Controls:

WB : HeLa cells, NIH/3T3 cells, MCF-7 cells, THP-1 cells, Jurkat cells, PC-12 cells

IHC : human spleen tissue, human lung tissue, mouse lung tissue, human colon cancer tissue

Background Information

STAT6, also named as Signal transducer and activator of transcription 6, is a 847 amino acid protein, which belongs to the transcription factor STAT family. STAT6 forms a homodimer or a heterodimer with a related family member. STAT6 translocates into the nucleus in response to phosphorylation. STAT6 is Involved in IL4/interleukin-4- and IL3/interleukin-3-mediated signaling. The antibody could identify about 100 kDa band, similar to the reported in the literature(PMID: 10961983).

Notable Publications

Author	Pubmed ID	Journal	Application
Xiwen Xiong	36232438	Int J Mol Sci	WB,IF
Weili Zheng	34778251	Front Cell Dev Biol	WB
Lingyan Chen	36443287	Cell Death Dis	WB

Storage

Storage:

Store at -20°C. Stable for one year after shipment.

Storage Buffer:

PBS with 0.02% sodium azide and 50% glycerol pH 7.3.

Aliquoting is unnecessary for -20°C storage

*** 20ul sizes contain 0.1% BSA

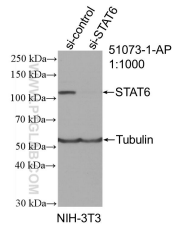
For technical support and original validation data for this product please contact:

T: 1 (888) 4PTGLAB (1-888-478-4522) (toll free in USA), or 1(312) 455-8498 (outside USA)

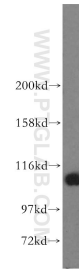
E: proteintech@ptglab.com
W: ptglab.com

This product is exclusively available under Proteintech Group brand and is not available to purchase from any other manufacturer.

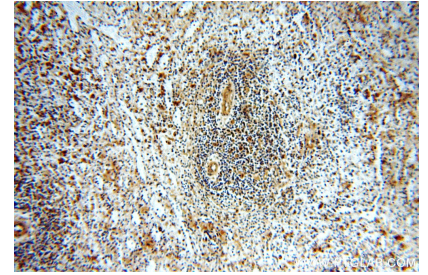
Selected Validation Data



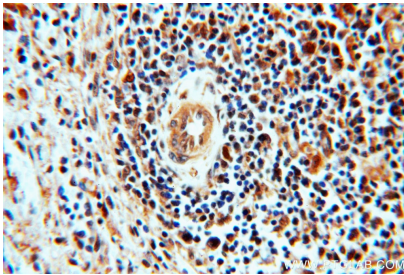
WB result of STAT6 antibody (51073-1-AP; 1:1000; incubated at room temperature for 1.5 hours) with sh-Control and sh-STAT6 transfected NIH/3T3 cells.



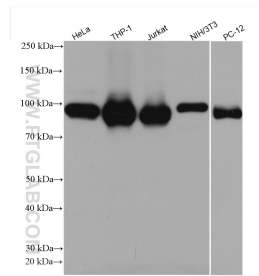
NIH/3T3 cells were subjected to SDS PAGE followed by western blot with 51073-1-AP (STAT6 antibody) at dilution of 1:1500 incubated at room temperature for 1.5 hours.



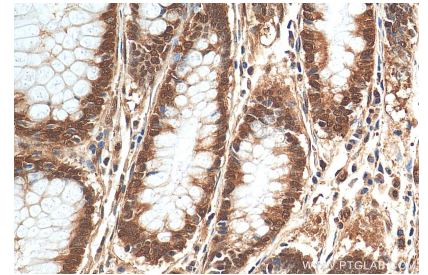
Immunohistochemical analysis of paraffin-embedded human spleen using 51073-1-AP (STAT6 antibody) at dilution of 1:50 (under 10x lens).



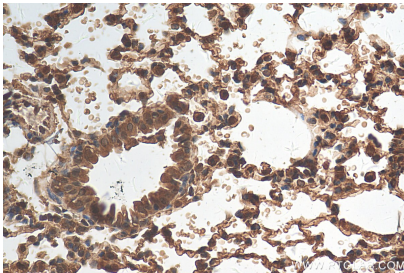
Immunohistochemical analysis of paraffin-embedded human spleen using 51073-1-AP (STAT6 antibody) at dilution of 1:50 (under 40x lens).



Various lysates were subjected to SDS PAGE followed by western blot with 51073-1-AP (STAT6 antibody) at dilution of 1:4000 incubated at room temperature for 1.5 hours.



Immunohistochemical analysis of paraffin-embedded human colon cancer tissue slide using 51073-1-AP (STAT6 antibody) at dilution of 1:200 (under 40x lens). Heat mediated antigen retrieval with Tris-EDTA buffer (pH 9.0).



Immunohistochemical analysis of paraffin-embedded mouse lung tissue slide using 51073-1-AP (STAT6 antibody) at dilution of 1:200 (under 40x lens). Heat mediated antigen retrieval with Tris-EDTA buffer (pH 9.0).