

For Research Use Only

# MEK1-Specific Polyclonal antibody

Catalog Number: 51080-1-AP

8 Publications



## Basic Information

### Catalog Number:

51080-1-AP

### Size:

150ul, Concentration: 300 ug/ml by Nanodrop and 233 ug/ml by Bradford method using BSA as the standard;

### Source:

Rabbit

### Isotype:

IgG

### GenBank Accession Number:

BC139729

### GeneID (NCBI):

5604

### ENSEMBL Gene ID:

ENSG00000169032

### UNIPROT ID:

Q02750

### Full Name:

mitogen-activated protein kinase kinase 1

### Calculated MW:

43 kDa

### Purification Method:

Antigen affinity purification

### Recommended Dilutions:

IHC 1:20-1:200

## Applications

### Tested Applications:

IHC, ELISA

### Cited Applications:

WB

### Species Specificity:

human

### Cited Species:

human, mouse, Eriocheir sinensis

### Positive Controls:

IHC : human endometrial cancer tissue, human colon tissue

**Note-IHC: suggested antigen retrieval with TE buffer pH 9.0; (\*) Alternatively, antigen retrieval may be performed with citrate buffer pH 6.0**

## Background Information

MEK1 is also named as MAP2K1 (mitogen-activated protein kinase kinase 1), MAPKK1, PRKMK1, MKK1 and belongs to the MAP kinase kinase subfamily. It is a dual-specificity kinase that mediate ERK1 and ERK2 activation during adhesion and growth factor signaling(PMID:19219045). It also plays an essential role in extra-embryonic ectoderm during placentogenesis. MEK1 has 2 isoforms produced by alternative splicing with the molecular weight of 43 kDa and 41 kDa. It can be phosphorylated(PMID:21144847). This antibody is specific to MEK1.

## Notable Publications

Author	Pubmed ID	Journal	Application
Xiaochuan Zheng	33197858	Comp Biochem Physiol Part D Genomics Proteomics	WB
Wei Li	35042538	Cancer Cell Int	WB
Pengchao Zheng	32021289	Onco Targets Ther	WB

## Storage

### Storage:

Store at -20°C. Stable for one year after shipment.

### Storage Buffer:

PBS with 0.02% sodium azide and 50% glycerol pH 7.3.

Aliquoting is unnecessary for -20°C storage

\*\*\* 20ul sizes contain 0.1% BSA

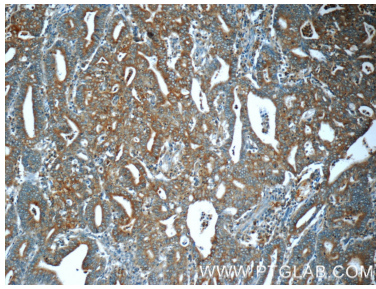
For technical support and original validation data for this product please contact:

T: 1 (888) 4PTGLAB (1-888-478-4522) (toll free in USA), or 1(312) 455-8498 (outside USA)

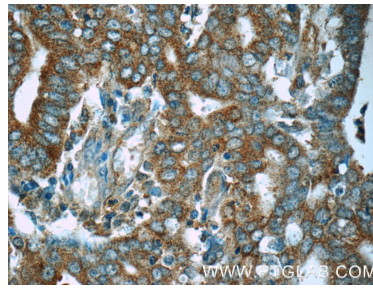
E: proteintech@ptglab.com  
W: ptglab.com

This product is exclusively available under Proteintech Group brand and is not available to purchase from any other manufacturer.

## Selected Validation Data



Immunohistochemical analysis of paraffin-embedded human endometrial cancer tissue slide using 51080-1-AP (MEK1-Specific antibody) at dilution of 1:50 (under 10x lens).



Immunohistochemical analysis of paraffin-embedded human endometrial cancer tissue slide using 51080-1-AP (MEK1-Specific antibody) at dilution of 1:50 (under 40x lens).