

For Research Use Only

KIAA1033 Polyclonal antibody

Catalog Number: 51101-1-AP **2 Publications**



Basic Information

Catalog Number: 51101-1-AP	GenBank Accession Number: BC104994	Purification Method: Antigen affinity purification
Size: 150ul , Concentration: 500 µg/ml by Nanodrop and 333 µg/ml by Bradford method using BSA as the standard;	GeneID (NCBI): 23325	Recommended Dilutions: WB 1:500-1:3000
Source: Rabbit	Full Name: KIAA1033	
Isotype: IgG	Calculated MW: 136.4 kDa	
	Observed MW: 136 kDa	

Applications

Tested Applications: WB,ELISA	Positive Controls: WB : A549 cells, HeLa cells
Cited Applications: WB	
Species Specificity: human	
Cited Species: human, mouse	

Background Information

KIAA1033, also named as WASH-interacting protein and SWIP, is a component of WASH complex. The WASH complex plays a key role in the fission of tubules that serve as transport intermediates during endosome sorting. KIAA1033 has two isoforms with MW 100 kDa and 136 kDa.

Notable Publications

Author	Pubmed ID	Journal	Application
Benjamin J Tyrrell	27390154	Pigment Cell Melanoma Res	WB
Yifei Pei	35993307	Autophagy	WB

Storage

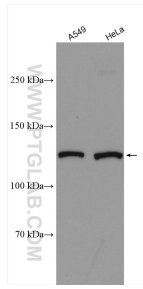
Storage:
Store at -20°C.
Storage Buffer:
PBS with 0.02% sodium azide and 50% glycerol pH 7.3.
Aliquoting is unnecessary for -20°C storage

***** 20ul sizes contain 0.1% BSA**

For technical support and original validation data for this product please contact:
T: 1 (888) 4PTGLAB (1-888-478-4522) (toll free in USA), or 1(312) 455-8498 (outside USA)
E: proteintech@ptglab.com
W: ptglab.com

This product is exclusively available under Proteintech Group brand and is not available to purchase from any other manufacturer.

Selected Validation Data



Various lysates were subjected to SDS PAGE followed by western blot with 51101-1-AP (KIAA1033 antibody) at dilution of 1:1500 incubated at room temperature for 1.5 hours.